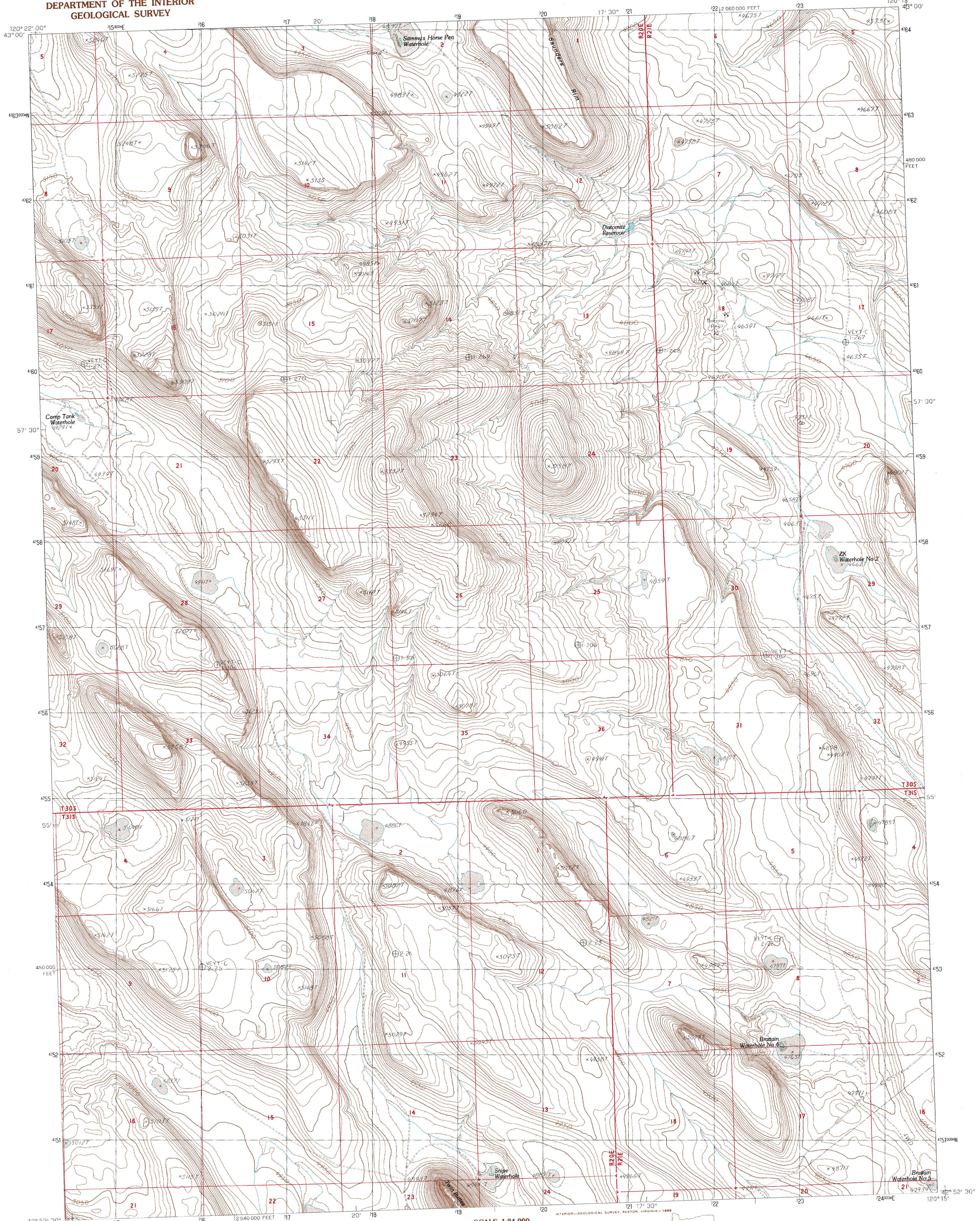


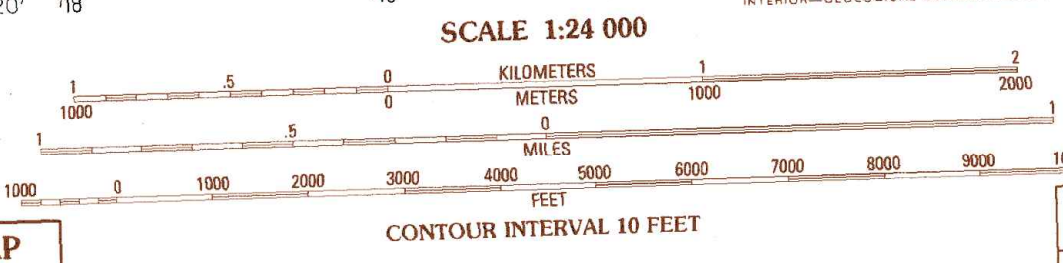
UNITED STATES  
DEPARTMENT OF THE INTERIOR  
GEOLOGICAL SURVEY

DIATOMITE RESERVOIR QUADRANGLE  
OREGON—LAKE CO.  
7.5 MINUTE SERIES (TOPOGRAPHIC)



PRODUCED BY THE UNITED STATES GEOLOGICAL SURVEY  
CONTROL BY USGS, NOS/NOAA  
COMPILED FROM AERIAL PHOTOGRAPHS TAKEN 1988  
FIELD CHECKED 1981. MAP EDITED 1985  
PROJECTION LAMBERT CONFORMAL CONIC  
GRID: 1000-METER UNIVERSAL TRANSVERSE MERCATOR, ZONE 10  
10,000-FOOT STATE GRID TICS 1983  
UTM GRID DECLINATION OREGON SOUTH ZONE  
1983 MAGNETIC NORTH DECLINATION 1983  
VERTICAL DATUM NATIONAL GEODETIC VERTICAL DATUM OF 1929  
HORIZONTAL DATUM 1983 NORTH AMERICAN DATUM  
To place on the predicted North American Datum of 1983,  
move the projection lines as shown by dashed corner ticks  
(19 meters north / 88 meters east)  
There may be private inholdings within the boundaries of any  
Federal and State Reservations shown on this map

**PROVISIONAL MAP**  
Produced from original  
manuscript drawings. Informa-  
tion shown as of date of  
field check.



TO CONVERT METERS TO FEET MULTIPLY BY 3.2808  
TO CONVERT FEET TO METERS MULTIPLY BY 0.3048

1	2	3	1 Sheep Rock
2	3	4	2 Fire Lake
3	4	5	3 Poverty Basin North
4	5	6	4 Bull Lake
5	6	7	5 Poverty Basin South
6	7	8	6 Sharp Top
			7 Biscuit Point
			8 Sawed Horn

**ROAD LEGEND**  
Improved Road.....  
Unimproved Road.....  
Trail.....  
Interstate Route □ U.S. Route ○ State Route

**DIATOMITE RESERVOIR, OREG.**  
PROVISIONAL EDITION 1985

42120-H3-TF-024

THIS MAP COMPLIES WITH NATIONAL MAP ACCURACY STANDARDS  
FOR SALE BY U. S. GEOLOGICAL SURVEY, DENVER, COLORADO 80225, OR RESTON, VIRGINIA 22092