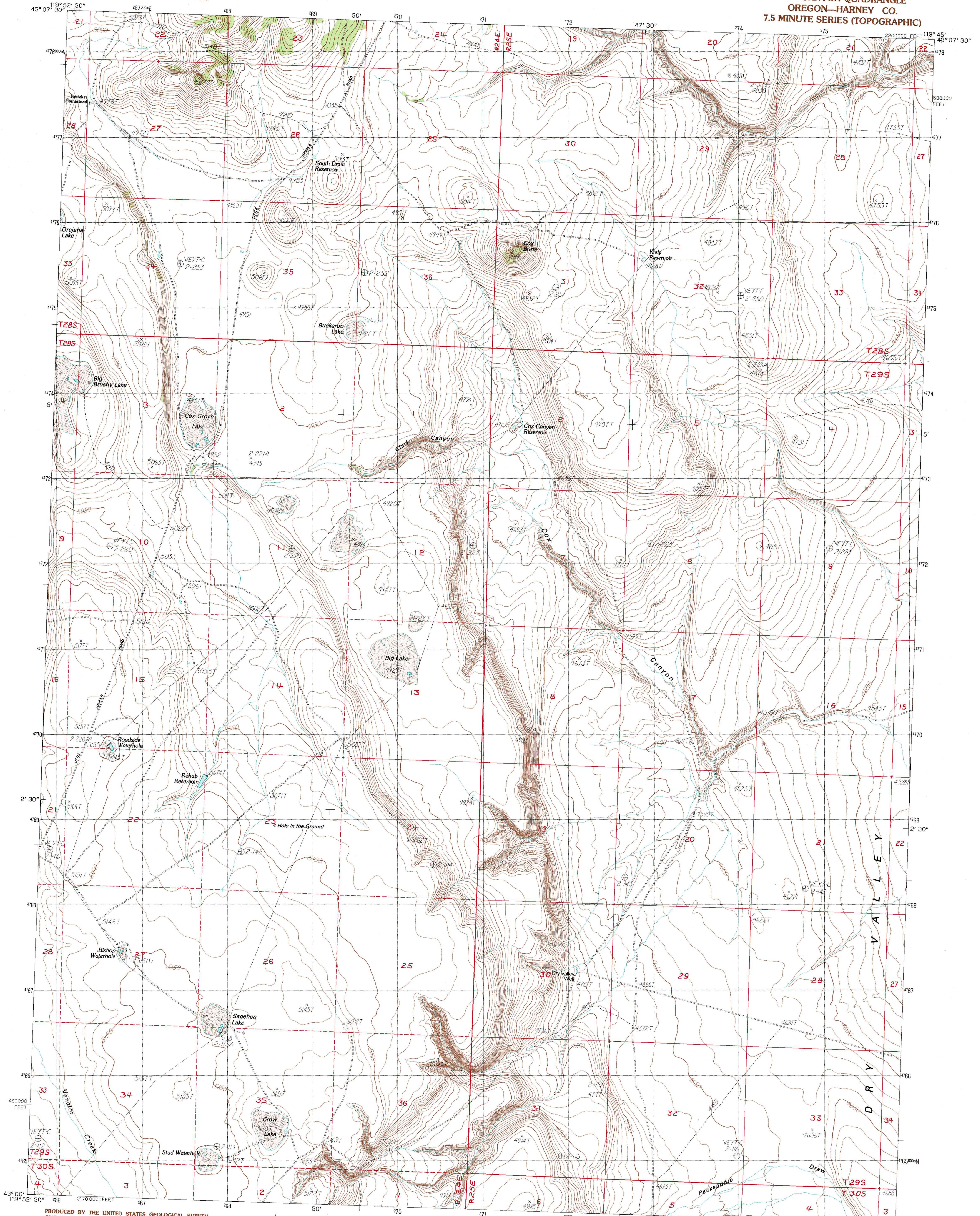


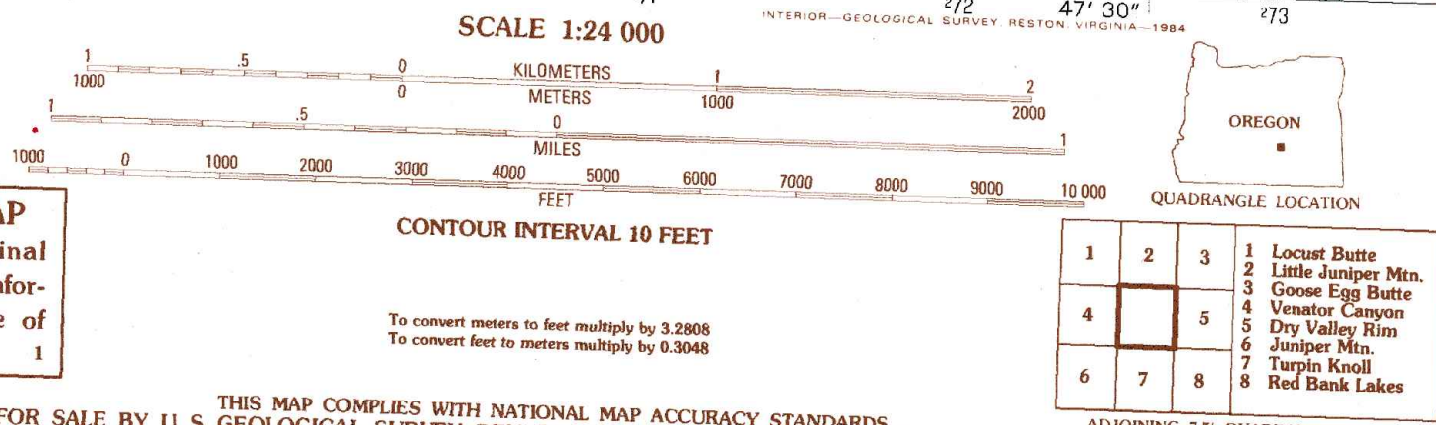
UNITED STATES  
DEPARTMENT OF THE INTERIOR  
GEOLOGICAL SURVEY

COX CANYON QUADRANGLE  
OREGON—HARNEY CO.  
7.5 MINUTE SERIES (TOPOGRAPHIC)



PRODUCED BY THE UNITED STATES GEOLOGICAL SURVEY  
CONTROL BY ..... USGS, NOS/NOAA  
COMPILED FROM AERIAL PHOTOGRAPHS TAKEN ..... 1974 AND 1980  
FIELD CHECKED ..... 1981. MAP EDITED ..... 1986  
PROJECTION ..... LAMBERT CONFORMAL CONIC  
GRID: 1000-METER UNIVERSAL TRANSVERSE MERCATOR ..... ZONE 11  
18000-FOOT STATE GRID TICKS ..... OREGON, SOUTH ZONE  
UTM GRID DECLINATION ..... 18° EAST  
1980 MAGNETIC NORTH DECLINATION ..... 1955 WEST  
VERTICAL DATUM ..... 1927 NORTH AMERICAN DATUM  
HORIZONTAL DATUM ..... 1927 NORTH AMERICAN DATUM  
To place on the predicted North American Datum of 1983,  
move the projection lines as shown by dashed corner ticks  
(18 meters north / 87 meters east)  
There may be private inholdings within the boundaries of any  
Federal and State Reservations shown on this map.

**PROVISIONAL MAP**  
Produced from original  
manuscript drawings. Information  
shown as of date of  
photography.



COX CANYON, OREG.  
PROVISIONAL EDITION 1984  
43119-A7-TF-024