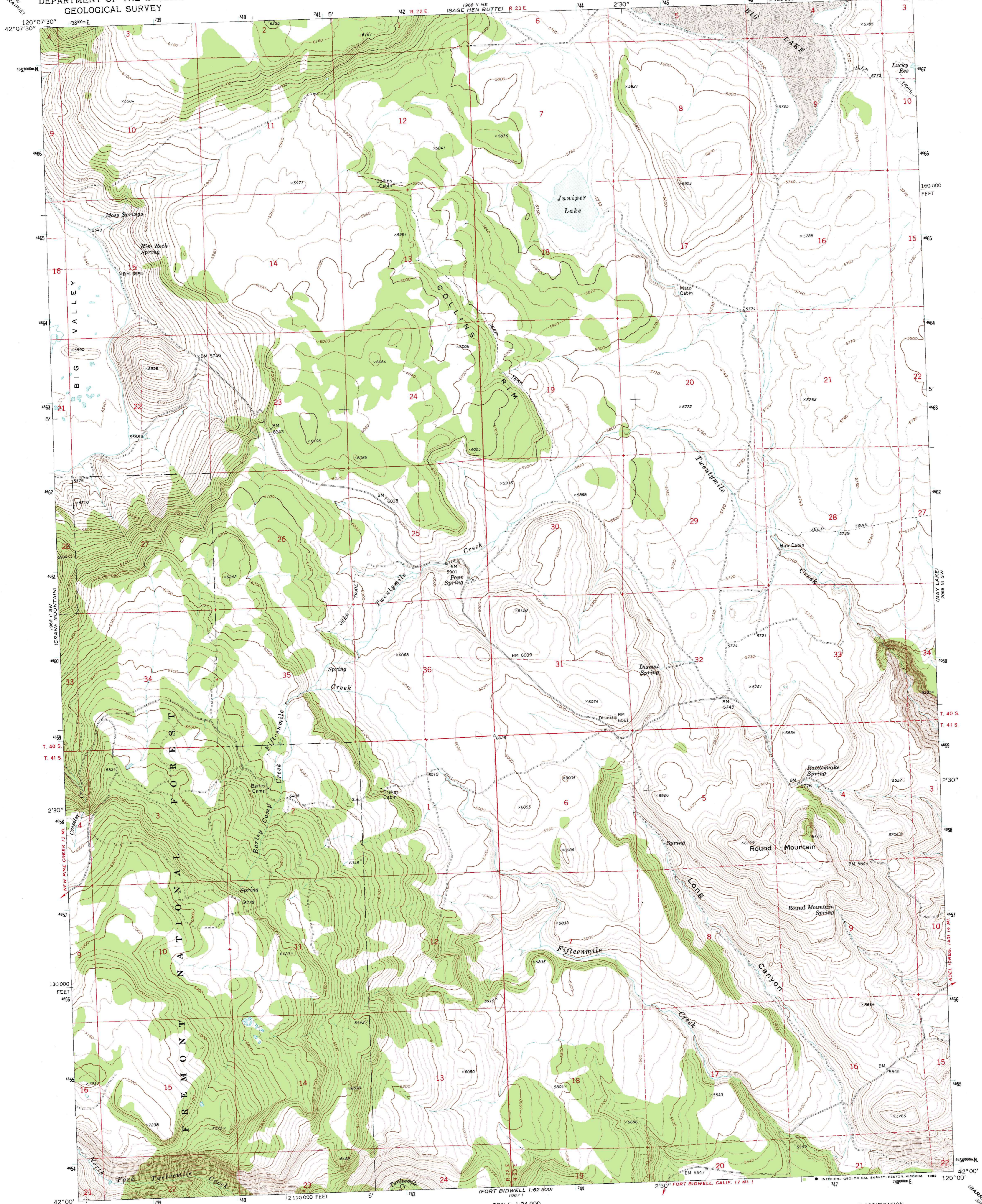
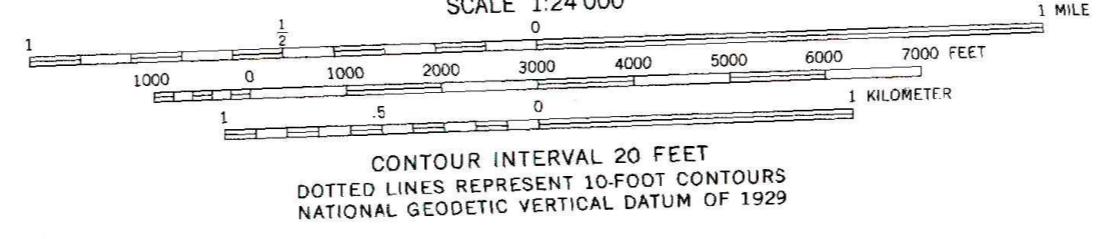
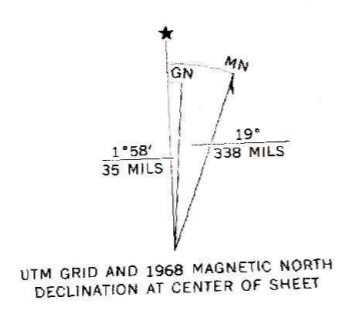


COLLINS RIM QUADRANGLE
OREGON—LAKE CO.
7.5 MINUTE SERIES (TOPOGRAPHIC)

UNITED STATES
DEPARTMENT OF THE INTERIOR
GEOLOGICAL SURVEY



Mapped, edited, and published by the Geological Survey
Control by USGS and USC&GS
Topography by photogrammetric methods from aerial
photographs taken 1967. Field checked 1968
Polyconic projection. 1927 North American datum
10,000-foot grid based on Oregon coordinate system,
south zone
1000-meter Universal Transverse Mercator grid ticks,
zone 10, shown in blue
To place on the predicted North American Datum 1983
move the projection lines 17 meters north and
87 meters east as shown by dashed corner ticks
Fine red dashed lines indicate selected fence lines
There may be private inholdings within the boundaries of
the National or State reservations shown on this map



ROAD CLASSIFICATION
Light duty road, all weather. Improved road, fair or dry weather
Improved surface. Improved road, fair or dry weather

THIS MAP COMPLIES WITH NATIONAL MAP ACCURACY STANDARDS
FOR SALE BY U. S. GEOLOGICAL SURVEY, DENVER, COLORADO 80225, OR RESTON, VIRGINIA 22092
A FOLDER DESCRIBING TOPOGRAPHIC MAPS AND SYMBOLS IS AVAILABLE ON REQUEST

Map photoinspected 1979
No major culture or drainage changes observed

COLLINS RIM, OREG.
N4200—W12000/7.5
1968
PHOTOINSPECTED 1979
DMA 1968 II SE—SERIES V892