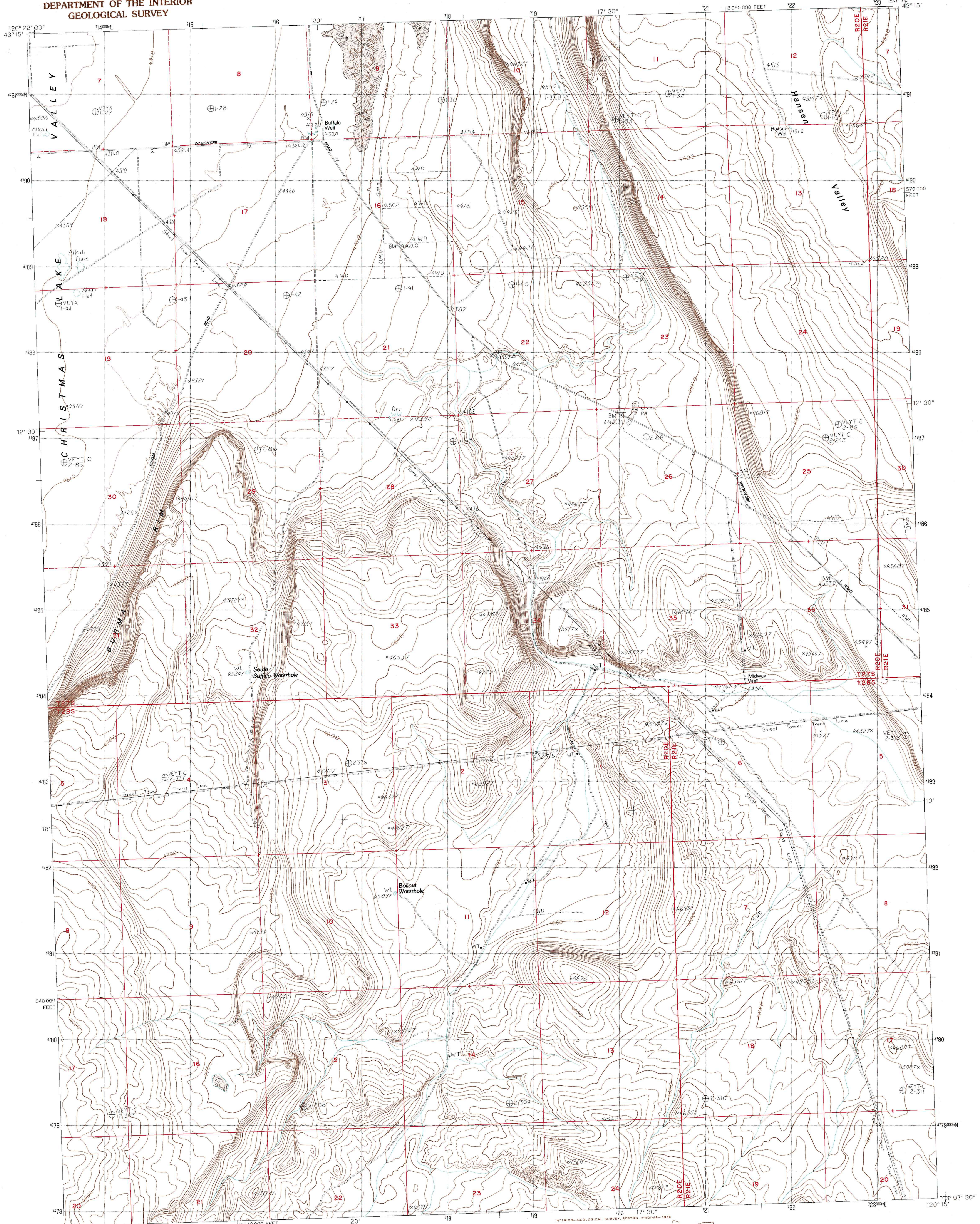


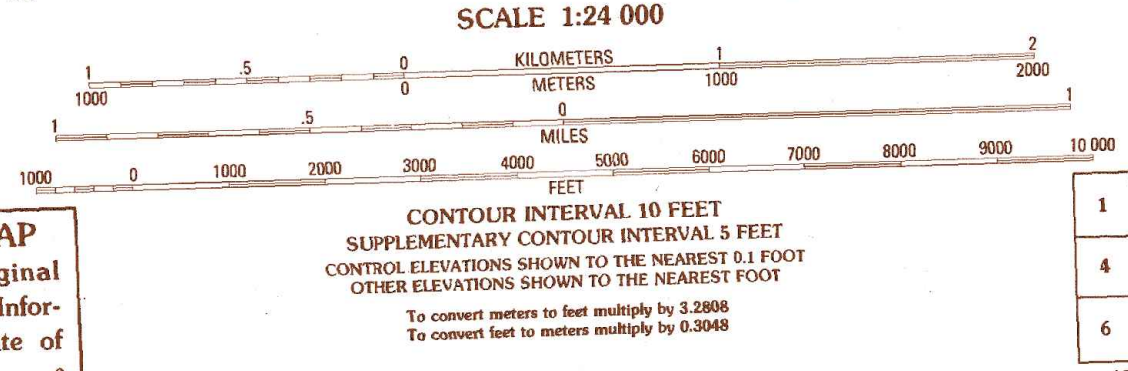
UNITED STATES
DEPARTMENT OF THE INTERIOR
GEOLOGICAL SURVEY

BUFFALO WELL QUADRANGLE
OREGON—LAKE CO.
7.5 MINUTE SERIES (TOPOGRAPHIC)



PRODUCED BY THE UNITED STATES GEOLOGICAL SURVEY
CONTROL BY USGS, NOS/NOAA 1986
COMPILED FROM AERIAL PHOTOGRAPHS TAKEN 1986
FIELD CHECKED 1981. MAP EDITED 1986
PROJECTION LAMBERT CONFORMAL CONIC
1000-METER UNIVERSAL TRANSVERSE MERCATOR ZONE 10
GRID: 1000-METER UNIVERSAL TRANSVERSE MERCATOR ZONE 10
HORIZONTAL DATUM 1927 NORTH AMERICAN DATUM
VERTICAL DATUM 1927 NORTH AMERICAN DATUM
1985 MAGNETIC NORTH DECLINATION 1°50' EAST
1985 MAGNETIC NORTH DECLINATION 1929
To place on the predicted North American Datum of 1983,
move the projection lines as shown by dashed corner ticks
(19 meters north / 88 meters east)
There may be private inholdings within the boundaries of any
Federal and State Reservations shown on this map

PROVISIONAL MAP
Produced from original
manuscript drawings. Infor-
mation shown as of date of
field check.



| | | |
|---|---|---|
| 1 | 2 | 3 |
| 4 | 5 | 6 |
| 7 | 8 | 9 |

ADJOINING 7.5' QUADRANGLE NAMES

ROAD LEGEND

Improved Road
Unimproved Road
Trail

Interstate Route U.S. Route State Route

BUFFALO WELL, OREG.
PROVISIONAL EDITION 1986

43120-BF-024

THIS MAP COMPLIES WITH NATIONAL MAP ACCURACY STANDARDS
FOR SALE BY U. S. GEOLOGICAL SURVEY, DENVER, COLORADO 80225, OR RESTON, VIRGINIA 22092