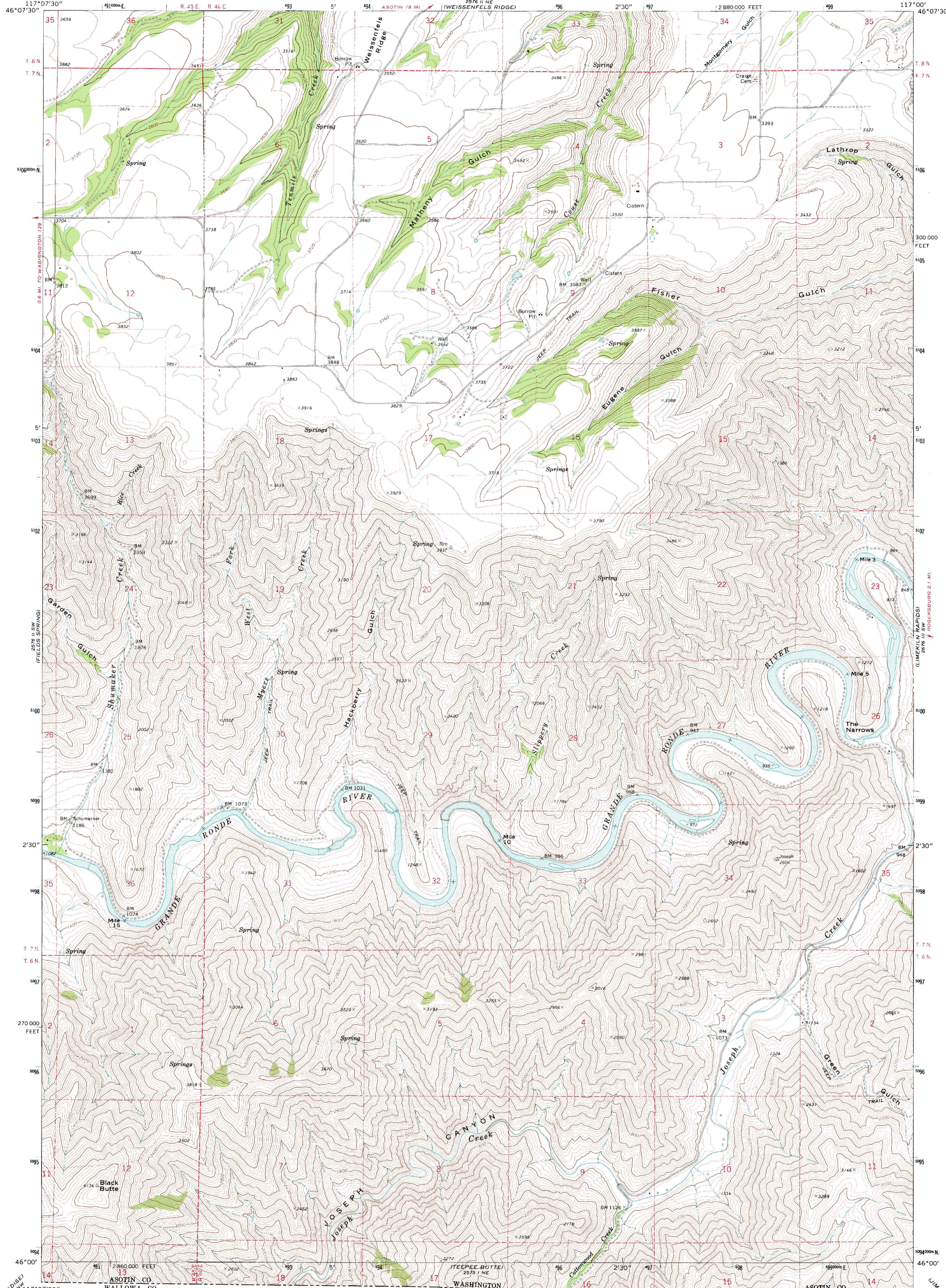


578 1/4 NW  
2875 1/4 SW

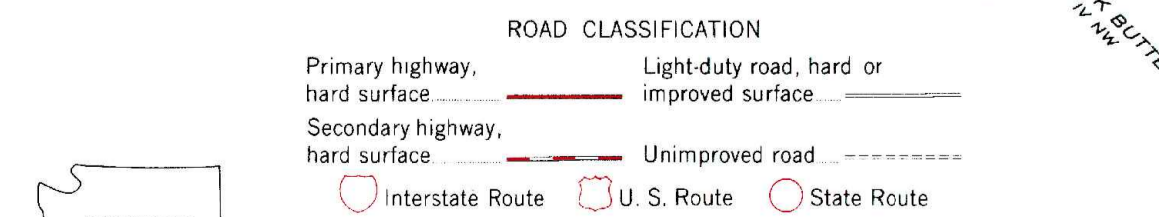
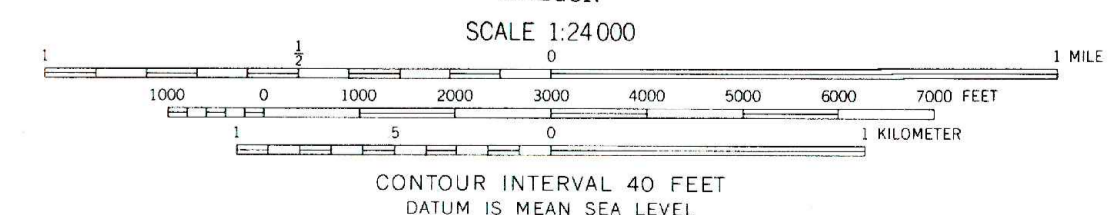
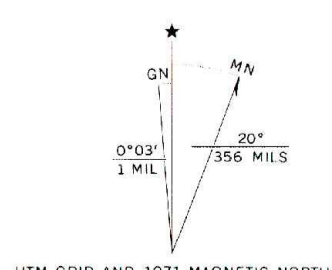
UNITED STATES  
DEPARTMENT OF THE INTERIOR  
GEOLOGICAL SURVEY

BLACK BUTTE QUADRANGLE  
WASHINGTON—ASOTIN CO.  
7.5 MINUTE SERIES (TOPOGRAPHIC)  
SE/4 ANATONE 15' QUADRANGLE

2876 1/4 NW  
CAPTAIN JOHN (A1915)



Mapped, edited, and published by the Geological Survey  
Control by USGS and USC&GS  
Topography by photogrammetric methods from aerial  
photographs taken 1970. Field checked 1971  
Projection and 10,000-foot grid ticks: Washington coordinate  
system, south zone (Lambert conformal conic)  
1000-meter Universal Transverse Mercator grid ticks,  
zone 11, shown in blue. 1927 North American datum  
Fine red dashed lines indicate selected fence lines



BLACK BUTTE, WASH.  
SE/4 ANATONE 15' QUADRANGLE  
N4600—W11700/7.5

THIS MAP COMPLIES WITH NATIONAL MAP ACCURACY STANDARDS  
FOR SALE BY U. S. GEOLOGICAL SURVEY, DENVER, COLORADO 80225, OR WASHINGTON, D. C. 20242  
A FOLDER DESCRIBING TOPOGRAPHIC MAPS AND SYMBOLS IS AVAILABLE ON REQUEST