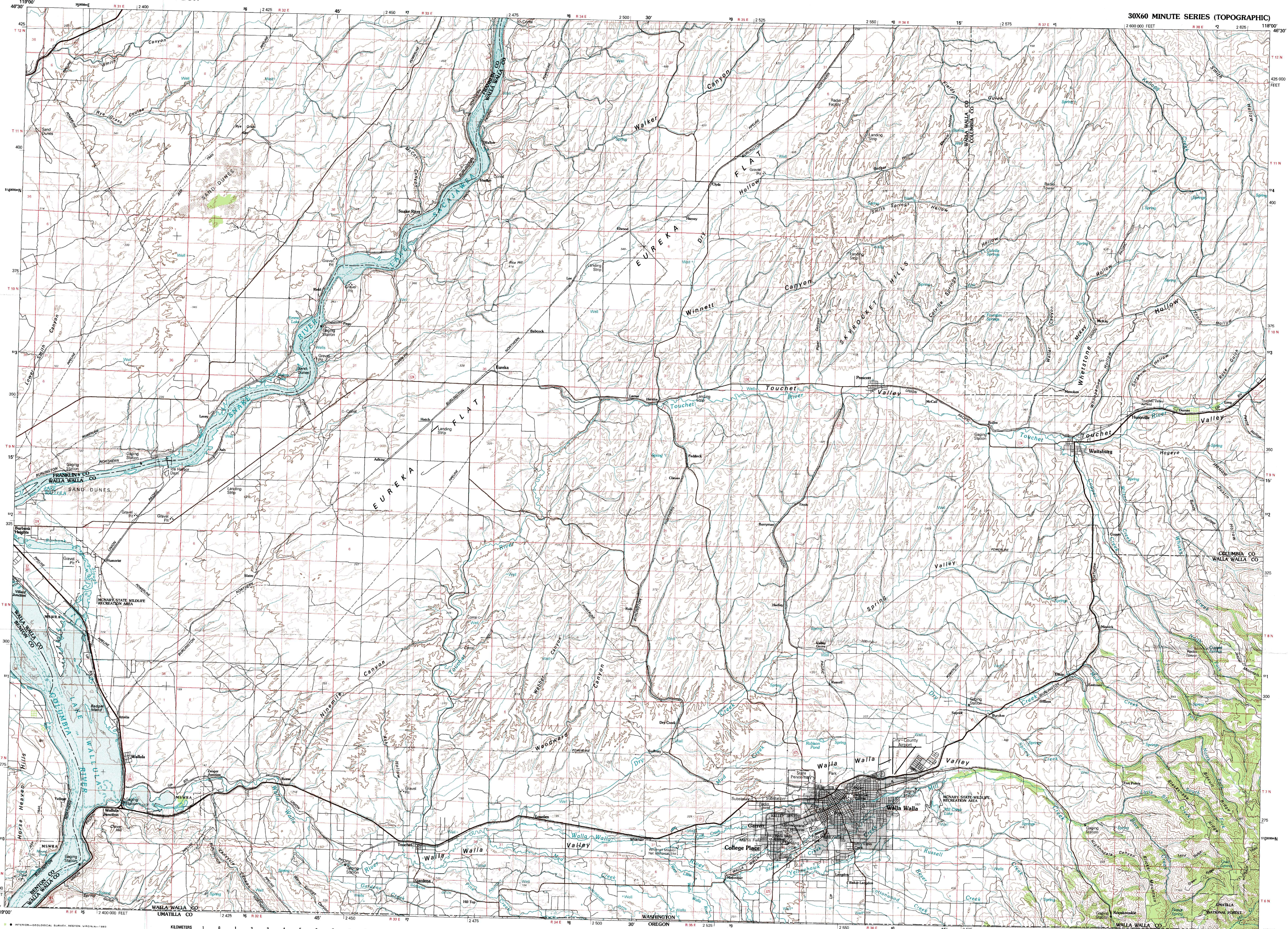


WALLA WALLA, WASHINGTON-OREGON

30X60 MINUTE SERIES (TOPOGRAPHIC)

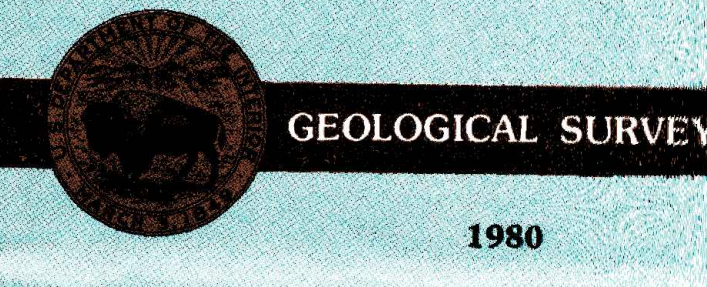


1:100 000-scale metric topographic map of
Walla Walla
WASHINGTON-OREGON



30 X 60 MINUTE QUADRANGLE SHOWING

- Contours and elevations in meters
- Highways, roads and other manmade structures
- Water features
- Woodland areas
- Geographic names



Produced by the United States Geological Survey
Compiled from USGS 1:24 000-scale topographic maps dated 1963-1978. Planimetry revised from aerial photographs taken 1976 and other source data. Revised information not field checked. Map edited 1980.
Projection and 10 000-meter grid, zone 11, Universal Transverse Mercator
25 000-foot grid ticks based on Washington coordinate system, south zone, 1927 North American Datum
To place on the predicted North American Datum 1983 move the projection lines 18 meters north and 83 meters east
There may be private inholdings within the boundaries of the National or State reservation shown on this map

CONTOUR INTERVAL 50 METERS
SUPPLEMENTARY CONTOUR INTERVAL 25 METERS
NATIONAL GEODETIC VERTICAL DATUM OF 1929

THIS MAP COMPLIES WITH NATIONAL MAP ACCURACY STANDARDS

CONVERSION TABLE		DECLINATION DIAGRAM		ADJOINING MAPS		
Meters	Feet	Diagram		1	2	3
1	3.2808			4	5	8
2	6.5617			1	2	3
3	9.8425			4	5	6
4	13.1234			7	8	
5	16.4042					
6	19.6850					
7	22.9659					
8	26.2467					
9	29.5275					
10	32.8084					

To convert meters to feet multiply by 3.2808
To convert feet to meters multiply by 0.3048

UTM grid convergence (GM) and 1983 magnetic declination (MD) at center of map. Diagram is approximate.

1 Priest Rapids
2 Pullman
3 Richland
4 Clarkston
5
6
7
8

FOR SALE BY U. S. GEOLOGICAL SURVEY, DENVER, COLORADO 80225 OR RESTON, VIRGINIA 22092

Topographic Map Symbols

- Primary highway, hard surface
- Secondary highway, hard surface
- Light duty road, principal street, hard or improved surface
- Other road or street, trail
- Route marker, intersection, U. S. State
- Railroad, standard gage, narrow gage
- Bridge, overpass, underpass
- Tunnel, road, railroad
- Built up area, locality, elevation
- Airport, landing field, landing strip
- National boundary
- State boundary
- County boundary
- National or State reservation boundary
- Land grant boundary
- U. S. public lands survey, range, township, section
- Range, township, section line, protected
- Power transmission line, pipeline
- Dam, dam with lock
- Cemetery, building
- Windmill, water well, spring
- Mine shaft, adit or cave, mine, quarry, gravel pit
- Congrground, picnic area, U. S. location monument
- Ruins, cliff dwelling
- Disturbed surface: strip mine, lava, sand
- Contours: index, intermediate, supplementary
- Bathymetric contours: index, intermediate
- Stream, lake: perennial, intermittent
- Rapids, large and small, falls, large and small
- Area to be submerged, marsh, swamp
- Land subject to controlled inundation; woodland
- Barred; mangrove
- Orchard; vineyard

A pamphlet describing topographic maps is available on request

SCALE 1:100 000
1 CENTIMETER ON THE MAP REPRESENTS 1 KILOMETER ON THE GROUND
CONTOUR INTERVAL 50 METERS
SUPPLEMENTARY CONTOUR INTERVAL 25 METERS

WALLA WALLA, WASHINGTON-OREGON
N4600-W11800/30X60
1980