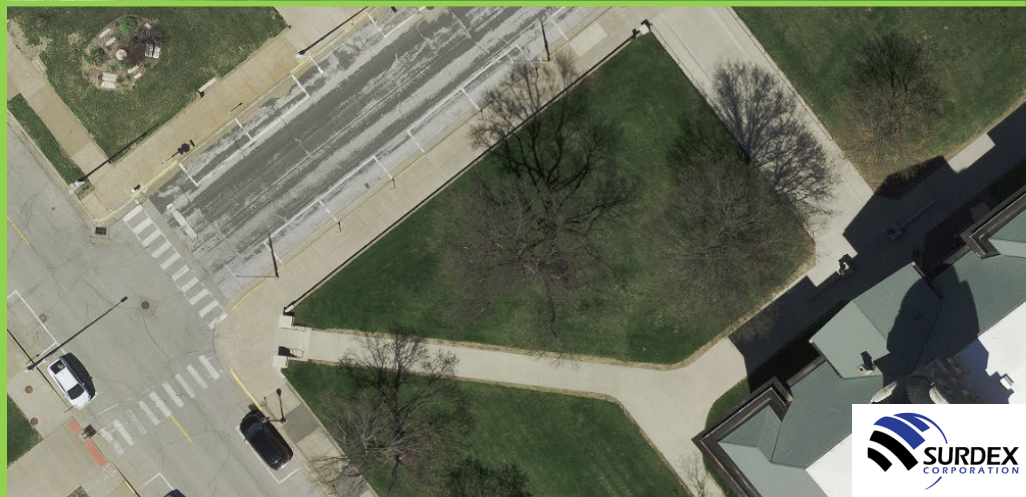
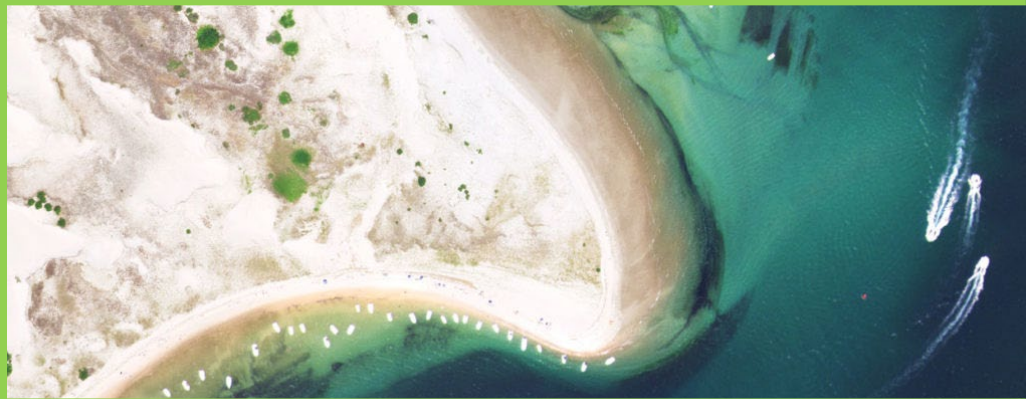
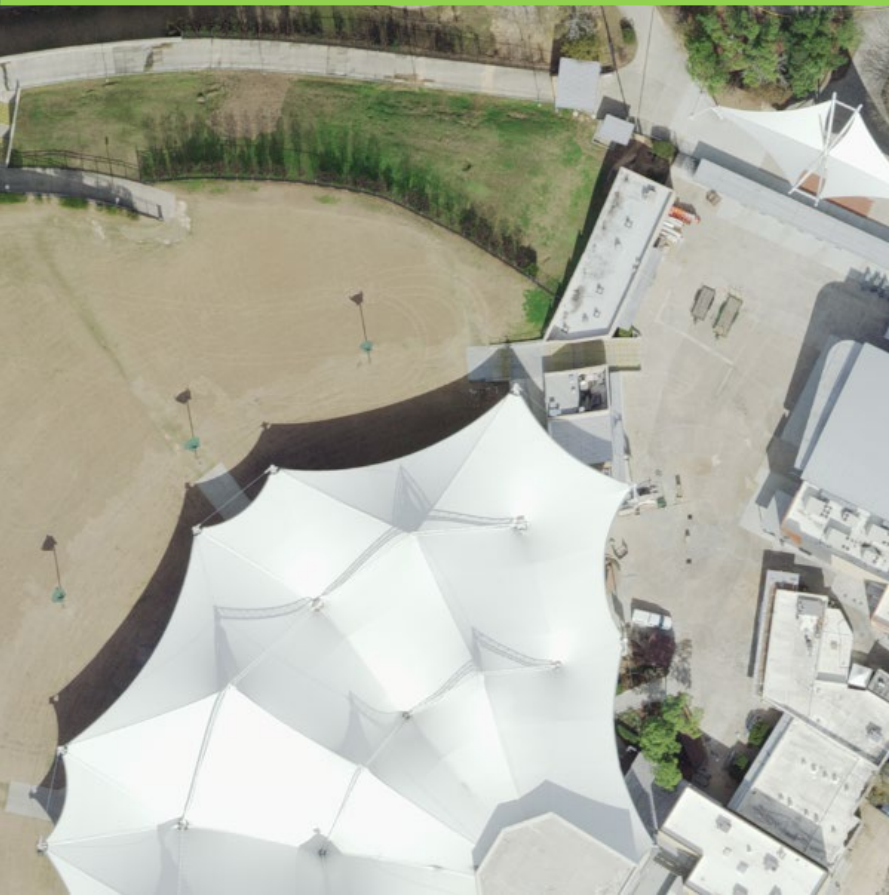


# CONSIDERATIONS FOR AERIAL IMAGERY





**Tim Bohn, C.P., PMP**

VP Business Development  
28 years at Surdex



**Wade Williams C.P.**

Director of Project Management  
28 years at Surdex

# Surdex: Your strategic geospatial resource

- ✦ Custom flyer to your specifications
  - partners for alternate solutions
- ✦ Ten aircraft to cover North America
  - owned and operated by Surdex—subcontractors not required
- ✦ 100% Geospatial
- ✦ HQ in St. Louis MO
- ✦ Diverse markets
- ✦ Same ownership since 1954
- ✦ 115 employees





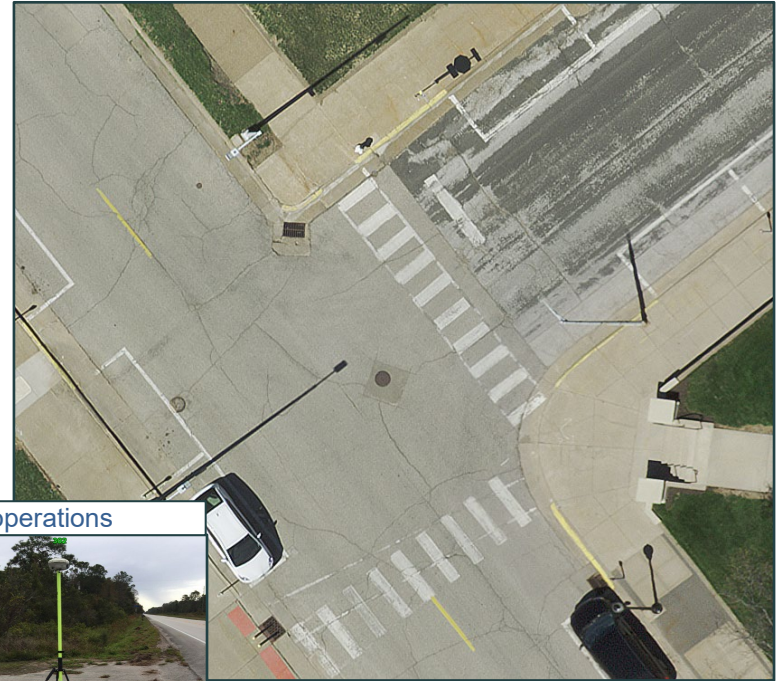
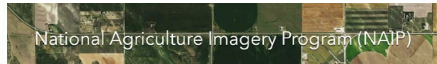
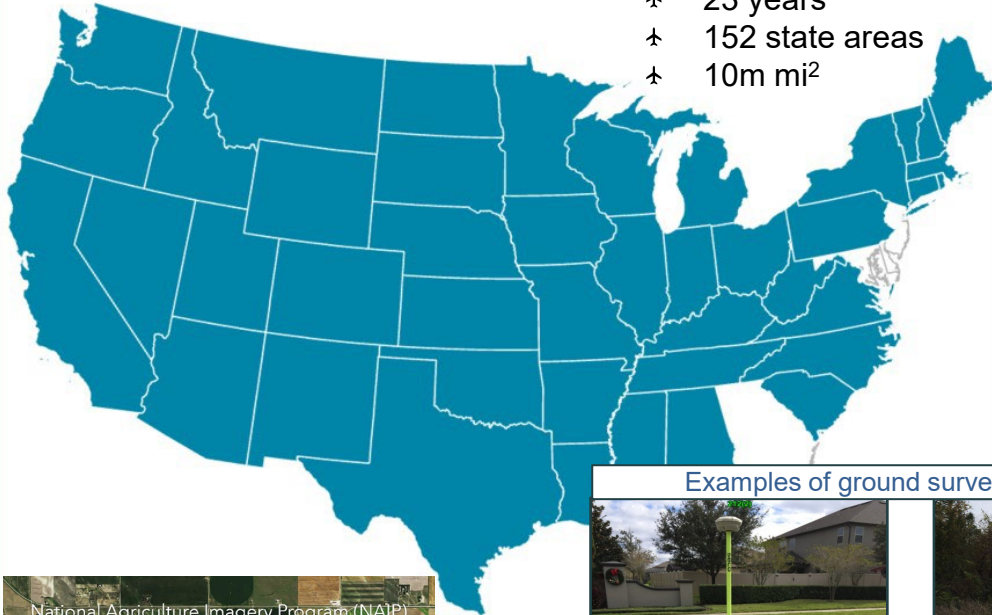
# Surdex model

- ✈ **Your specifications and schedule**
- ✈ **You own the data & distribution**
- ✈ **Pilot & color sample is standard**
- ✈ **Includes ground control & QA pts**
- ✈ **SurCheck & streaming at no cost**
- ✈ **10 aircraft + 15 sensors incl LiDAR**



# Large or Small

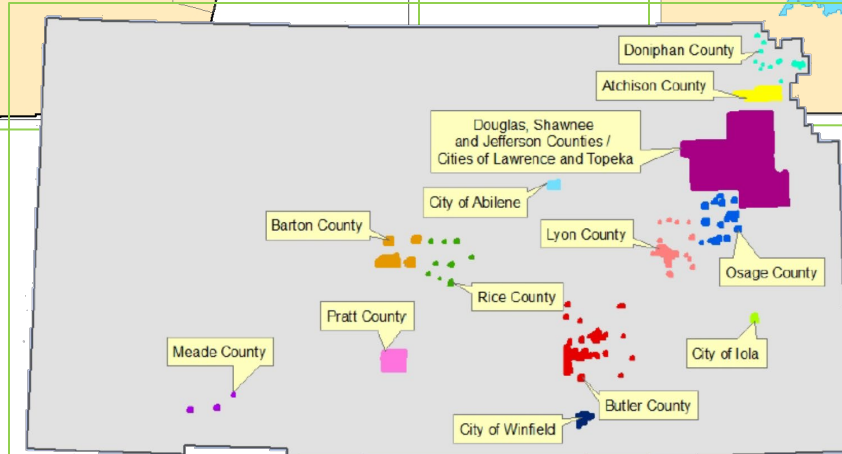
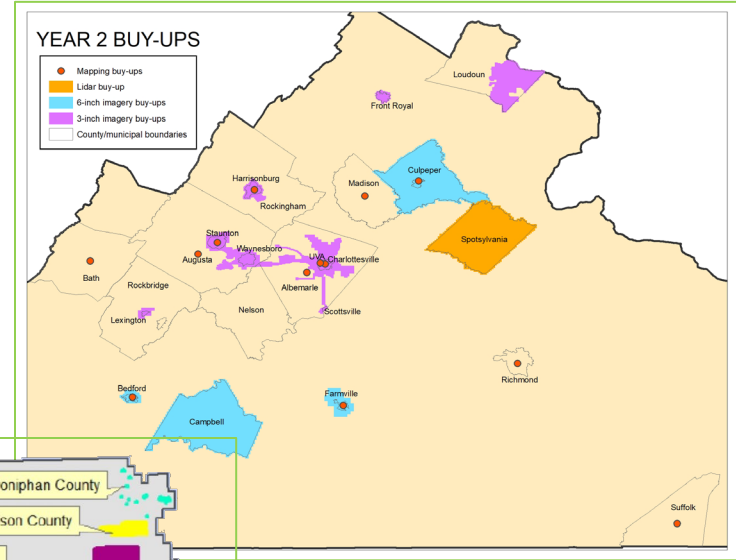
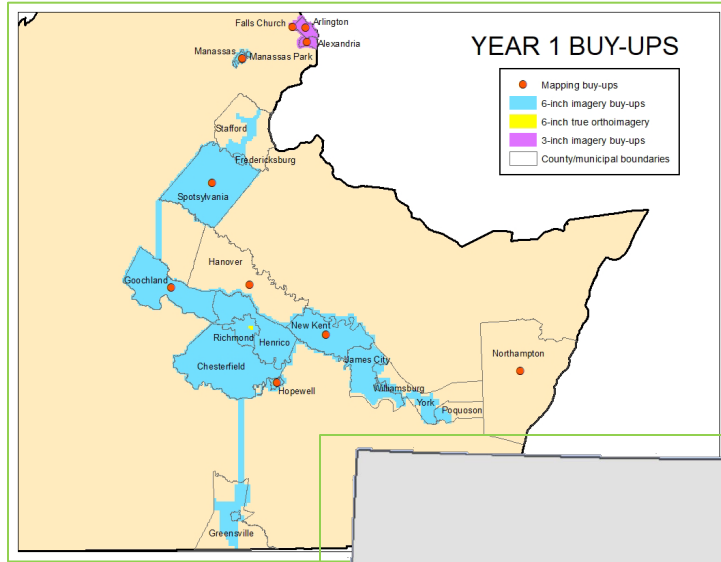
- † 23 years
- † 152 state areas
- † 10m mi<sup>2</sup>



Examples of ground survey operations



# Partner Buy-ups

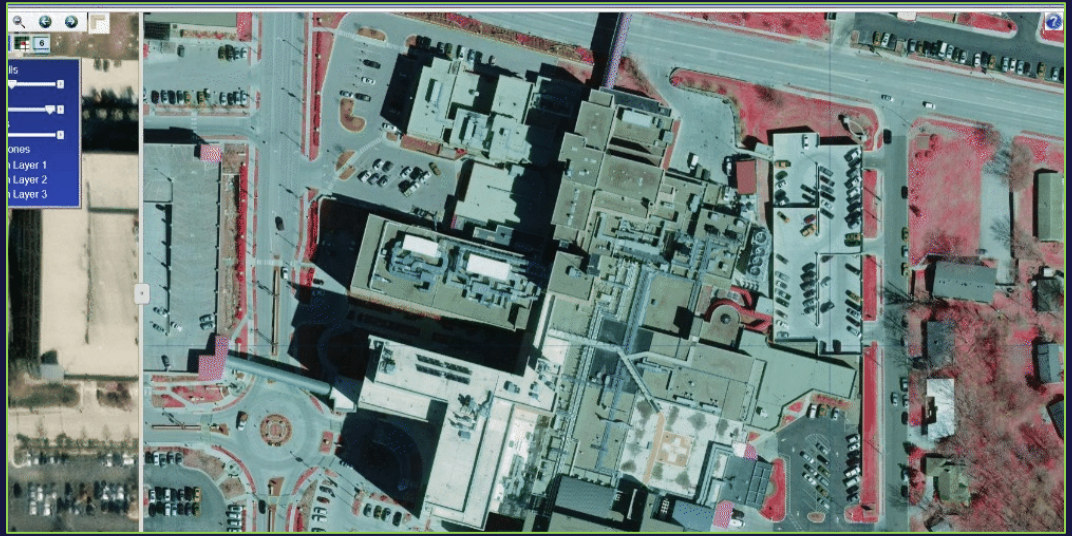
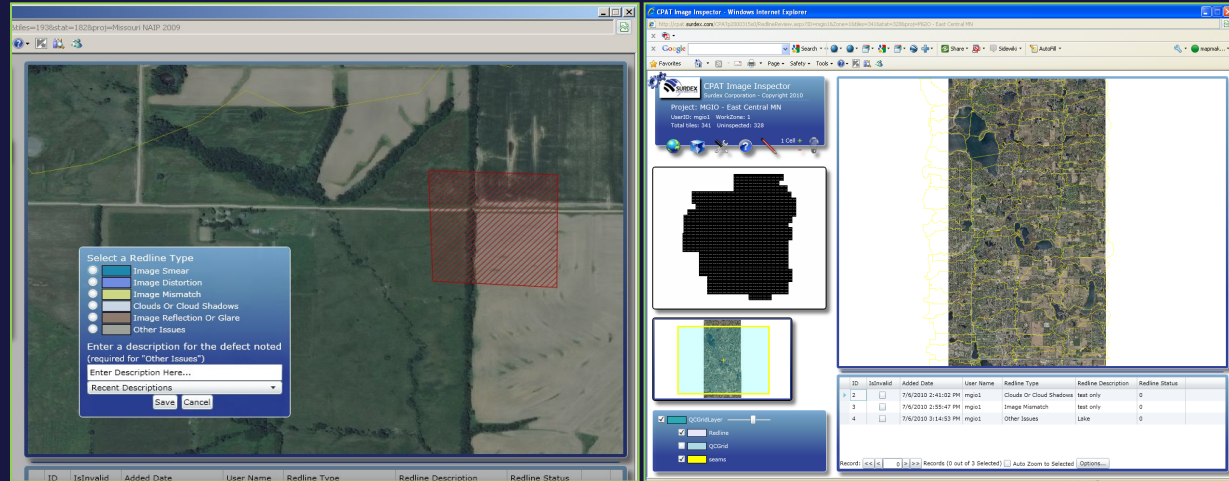




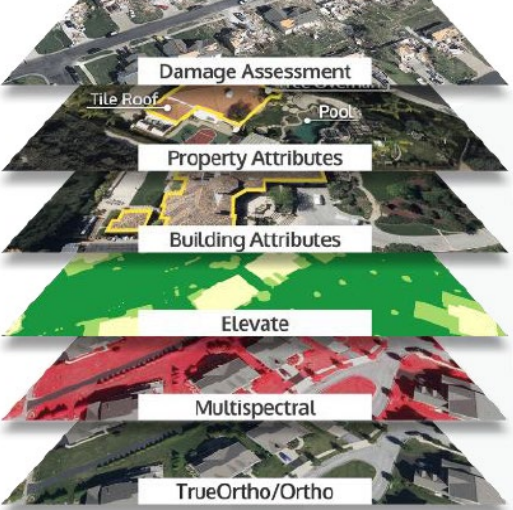
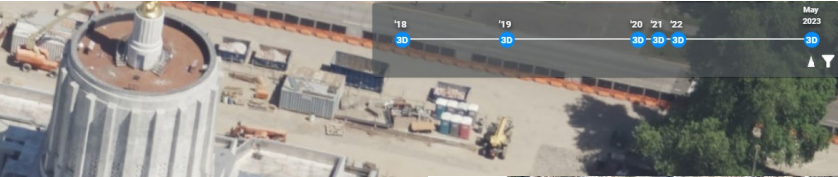
# SurCheck<sup>SM</sup>






## Online Inspection and Approval Tool

- Web based ESRI ImageServer
  - No software installation
  - Secure, password protected
  - Free training
- Seamless roam
- Redline areas of concern
- Overlay graphics & swipe other sources
- Tracking of review & acceptance



# Partner Content



 <p>Permit Enforcement</p>	 <p>Emergency Response and Preparedness</p>	 <p>Infrastructure Monitoring</p>	 <p>Agriculture Support and Subsidies</p>	 <p>Natural Resource Protection</p>
---	--	--	--	--



# Expectation Checklist



## Atmospheric conditions

---

- Cloud / shadows – where & how much saves \$\$
- Smoke - fires vs industrial
- Standing water vs flooding



## Area covered

---

- Full state vs planned split
- Priority areas
- Buy-up consideration



## Specifications

---

- Pixel size ≠ features detectable
- Ground survey; Accuracy is critical
- Detailed list of deliverables



## Distribution of data

---

- Schedule: 5 – 120 days
- Streaming service, instant access
- Public access
- Online QA
- Media shuttle delivery



## Reference layers

---

- Does it need to match other data?
- NAD83 replacement (NATRF 2022)

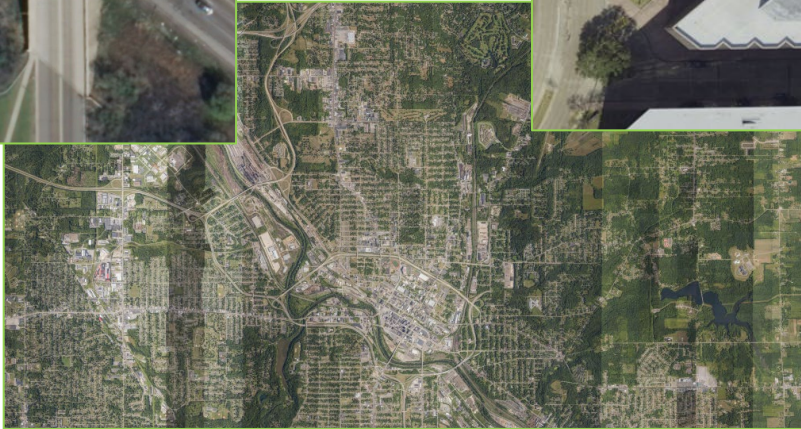


## References

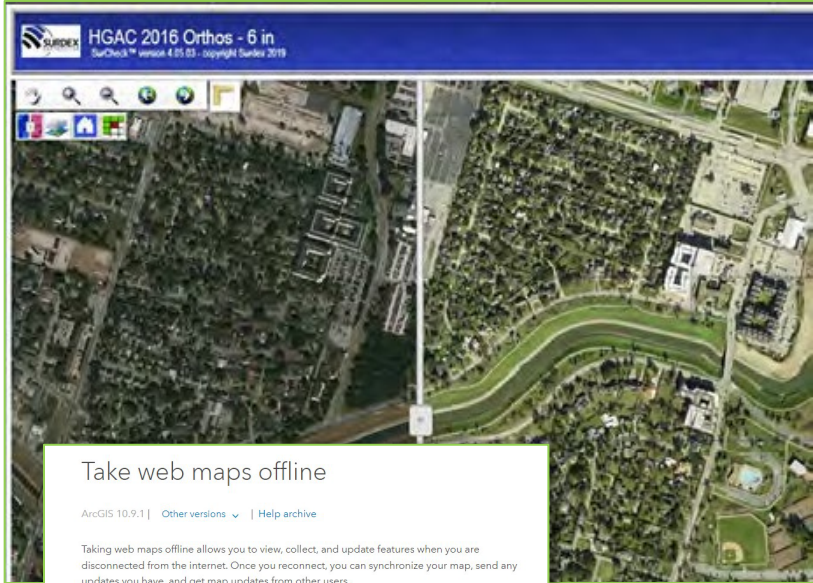
---

- Ask for and speak with references
- Obtain samples

# Not all imagery is equal



# Hosted Services



## Take web maps offline

ArcGIS 10.9.1 | [Other versions](#) | [Help archive](#)

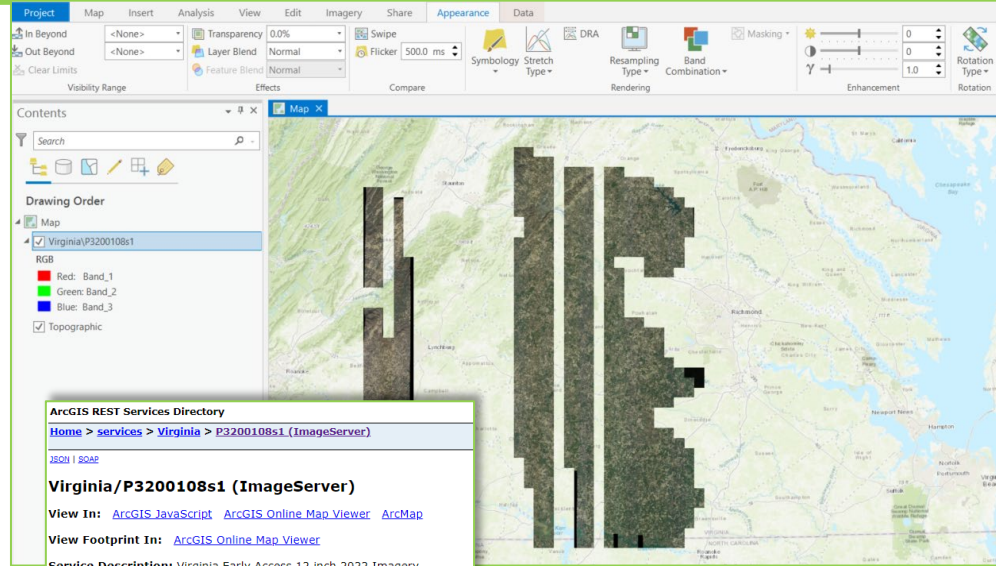
Taking web maps offline allows you to view, collect, and update features when you are disconnected from the internet. Once you reconnect, you can synchronize your map, send any updates you have, and get map updates from other users.

You can create a web map in an ArcGIS Enterprise portal for use offline in ArcGIS apps such as ArcGIS Collector, ArcGIS Survey123, ArcGIS Pro, and custom apps built with ArcGIS Runtime SDK.

You have the following two options for taking a map offline. Some apps may support one or the other, or both.

- On demand—Field users can download any portion of the map whenever they need it. The field user specifies the area they want to take offline along with the details of the basemap required.
- Create map areas—Map authors can create map areas to package data for specific areas ahead of time. Map areas speed up and simplify the map download process for field workers.

Enable the layers and map for offline use



### ArcGIS REST Services Directory

[Home](#) > [services](#) > [Virginia](#) > [P3200108s1 \(ImageServer\)](#)

[JSON](#) | [SOAP](#)

### Virginia/P3200108s1 (ImageServer)

View In: [ArcGIS JavaScript](#) [ArcGIS Online Map Viewer](#) [ArcMap](#)

View Footprint In: [ArcGIS Online Map Viewer](#)

**Service Description:** Virginia Early Access 12 inch 2022 Imagery

**Name:** Virginia/P3200108s1

**Description:** Virginia Early Access 12 inch 2022 Imagery

**Single Fused Map Cache:** false

#### Extent:

XMin: 1.119027199984014E7  
YMin: 3342336.0000652224  
XMax: 1.174732799984014E7  
YMax: 3997696.0000652224  
Spatial Reference: 102747 (2284)

#### Initial Extent:

XMin: 1.119027199984014E7  
YMin: 3342336.0000652224  
XMax: 1.174732799984014E7  
YMax: 3997696.0000652224  
Spatial Reference: 102747 (2284)

#### Full Extent:

XMin: 1.119027199984014E7  
YMin: 3342336.0000652224  
XMax: 1.174732799984014E7  
YMax: 3997696.0000652224  
Spatial Reference: 102747 (2284)



# Contracting Options



Contract # W912P920D0026

US Army Corps of Engineers St. Louis District

Company Name	Surdex Corporation
Surdex Contract #	47QTCA18D00J5
Program	Cooperative Purchasing Program
GSA Special Item Number (SIN)	541370GEO Earth Observation Solutions
Contract End Date	August 8, 2023



Contract Holder



[SCIENCE](#) [PRODUCTS](#) [NEWS](#) [CONNECT](#) [ABOUT](#)

[NATIONAL GEOSPATIAL PROGRAM](#)

Geospatial Products and Services Contracts

**MERRICK SURDEX**

JOINT VENTURE

<https://www.merrick-surdexjv.com/>

# Derived Elevation

