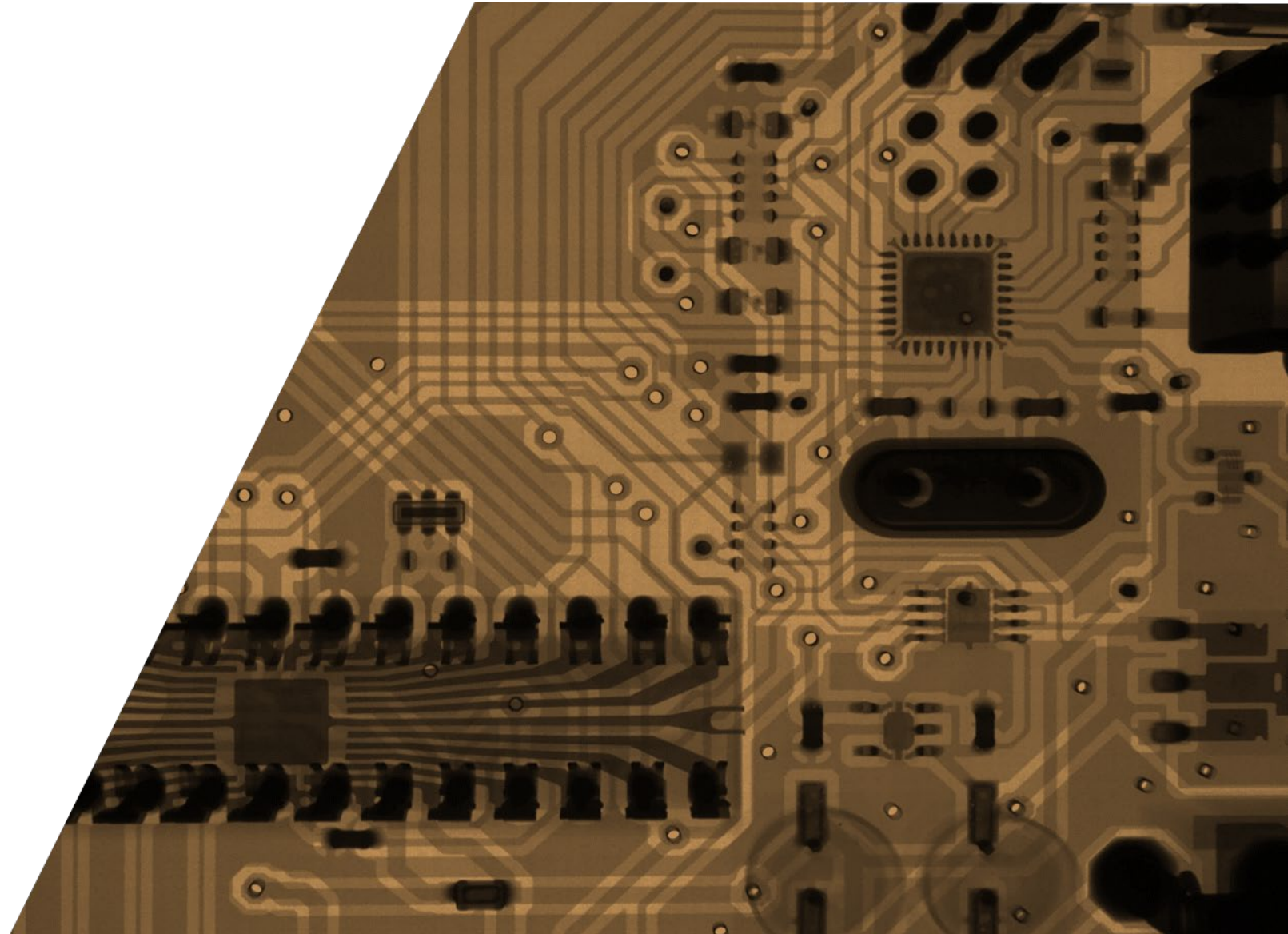




**ENTERPRISE**  
information services

## **GEOHub Update**

**April 13, 2023**  
**Framework Forum**



# What is GEOHub?

- One-stop hub for geospatial data and resources
- Public-Facing Hub Initiative
- Secure login for public bodies to access restricted data
- Statewide Projects / Initiatives like Imagery, Parcels, etc...

GEOHub Members Framework Program About Resources Terms OGIC

## Oregon GEOHub

Oregon's Authoritative Geospatial Repository

\*\*\*SITE IS STILL UNDER CONSTRUCTION, CONSIDER ALL CONTENT AS DRAFT\*\*\*

Find data using keywords like "imagery" or "city limits"

The Oregon GEOHub is an initiative of the Oregon Geographic Information Council (OGIC) and was developed in partnership with the Oregon Department of Administrative Services, Geospatial Enterprise Office (DAS GEO). GEOHub provides access to geospatial Framework data and services, FGDC compliant metadata, and geospatial data downloads for use by the public, academia, and all levels of government, and private companies to support the needs of Oregonians.

Most data within the GEOHub are open data and consumable by all. However, some data are restricted to public bodies and requires a user account for access to the secure portion of the portal. See the Members page for more information.

### Browse Data by Framework Theme

-  Address Points (fixed geographic location)
-  Administrative Boundaries (e.g., counties, cities, state parks, etc.)
-  Bioscience (e.g., fish habitat distribution, wetlands, habitats, etc.)
-  Cadastral (e.g., land ownerships, PLSS, etc.)
-  Climate (meteorological conditions, including temperature and precipitation ranges)
-  Coastal and Marine (e.g., shorelines or shoreline access, etc.)
-  Elevation (e.g., digital elevation models)
-  Geodetic Control (survey control points or other related fixed point for a site survey)



# Public Bodies & Use of Hub/ArcGIS Online

---

## **Public Body**

*“has the meaning given that term in ORS 174.109 (ORS 276A.500 (6))”*. Public body means state government bodies, local government bodies and special government bodies ([ORS 174.109](#)) [2001 c.74 §2].

- Existing ArcGIS Online (AGOL) accounts can be used to access GEOHub.
- If no AGOL account exists, GEO will create new accounts for public body members in the GEOHub Community Org.
- Hub Initiatives use AGOL, Groups, and Sharing Capabilities to dictate user access to restricted data and the organization of data.



# Forms in GEOHub

---



Account Request Form - Click the image



Data Readiness Form - Click the image

- Request an AGOL account from GEO.
- Request access to restricted data.

- Tell GEO a new or updated dataset is ready for QA/QC and publishing.

# Published Framework Data Goals

---

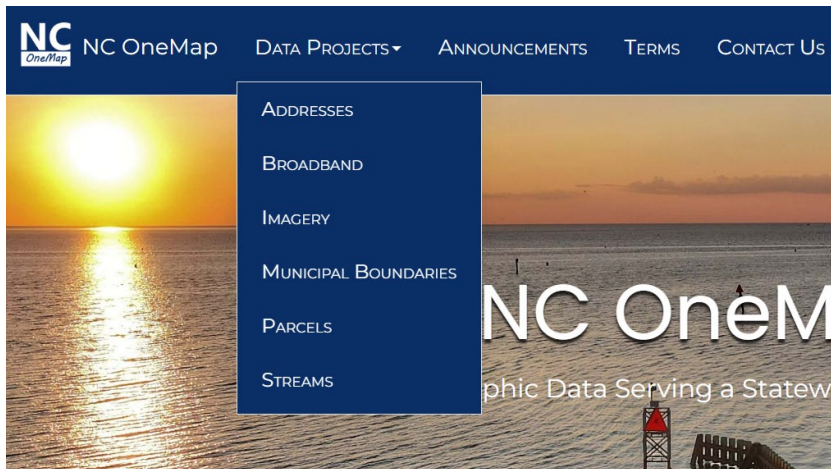
- Most data published as a Service
  - Web Mercator
- All data available as a downloadable .zip file / link provided in GEOHub
  - Oregon Lambert
- Data Publication Options
  - Data published by steward will be “registered” in GEOHub
  - Data published by GEO in GEOHub
- Data & Metadata QA/QC
  - Data will continue to be provided to GEO for QA/QC and made available for download
  - Metadata will continue to be provided to GEO for QA/QC



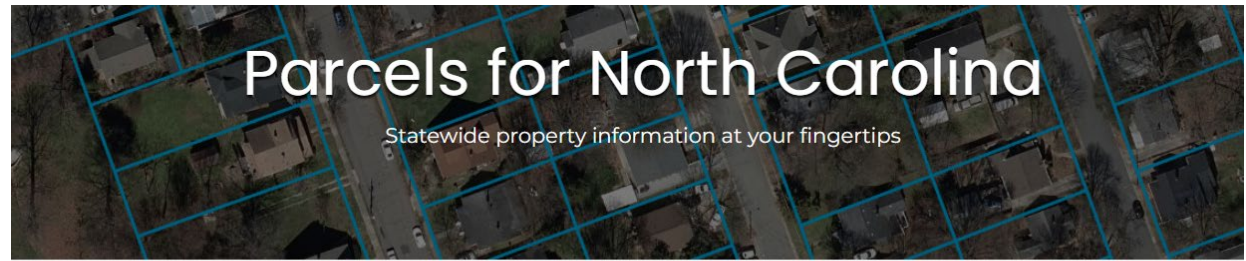


# Priority Data Projects

## Examples:



**\*\*Starting w/ Parcels and Imagery\*\***



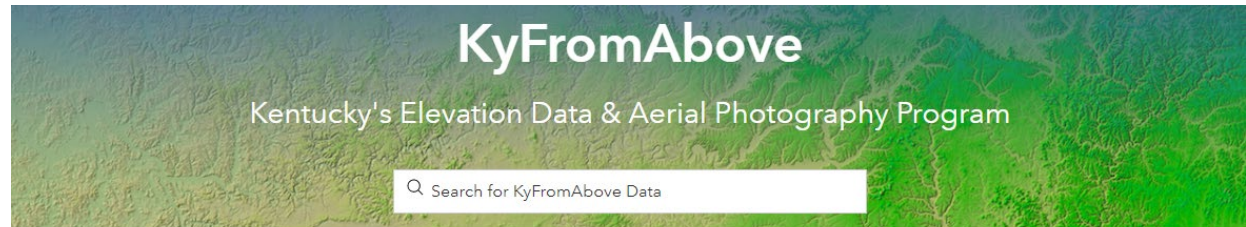
*"A statewide standardized parcel dataset is an incredibly valuable resource for a wide range of applications. North Carolina was an early national leader in land records automation, and completion of this parcel project puts the state back among the top five states for standardized, accessible parcel data."*

-- Nancy von Meyer, national expert on cadastral data and standards



## Introduction

The State of North Carolina developed an online tool for integrating land ownership from county sources. The "NC Parcels Transformer" translates parcel data from all 100 counties and the Eastern Band of Cherokee Indians into a data set with **standard data fields** for display



## Program Overview

The KyFromAbove initiative is focused on building and maintaining a current basemap for the Commonwealth that can meet the needs of its users at the state, federal, local, and regional level. A common basemap, including current color leaf-off aerial photography and elevation data (LiDAR), reduces the cost of developing GIS applications, promotes data sharing, and add efficiencies to many state agency business processes. All basemap data acquired through this effort is being made available in the public domain.

## KyFromAbove 2022 Elevation Data Now Online

Final deliverables from the 2022 elevation data acquisition are now available for download or access via image services. The project covered 20 counties in west-central and northern Kentucky. Both the DEM (GeoTIFF) and Point Cloud (LAZ) data can be downloaded by tile using the web maps

## Statewide Coverage of 6" Imagery Achieved

Statewide coverage of 6" resolution, leaf-off imagery was completed in 2022. Many thanks to all of the volunteers that assisted with imagery review and the agencies that provided funding for this critical data resource. The imagery should be available for use during early March.

# Spatial Data Library Transition

1. GEO will focus on publishing data identified as Framework first.
2. Launch GEOHub. (June)
3. Framework Data Download App will be removed. (July)
4. Review and act on remaining non-Framework data in SDL. (July – December)

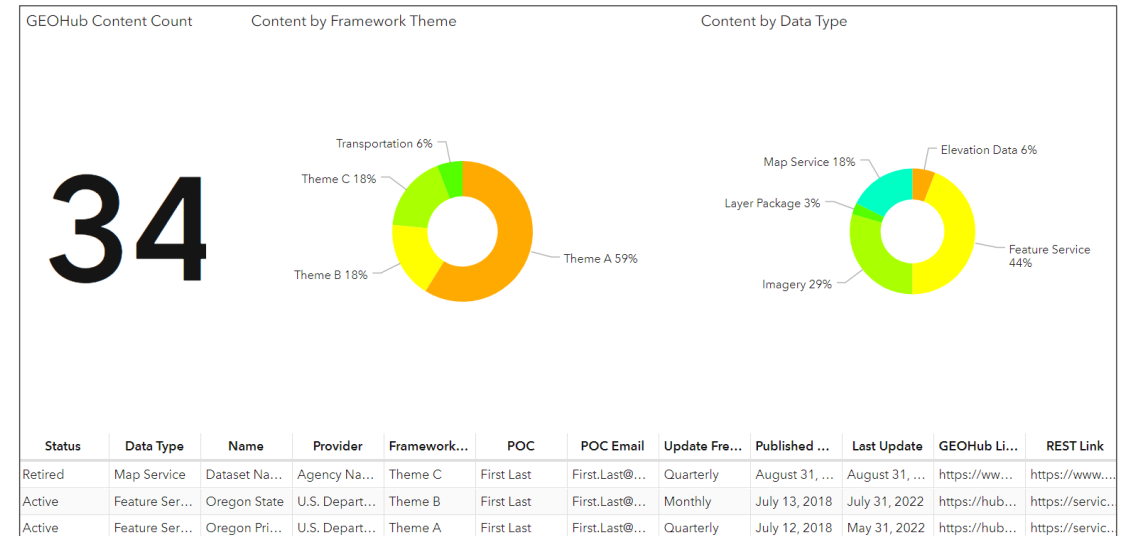
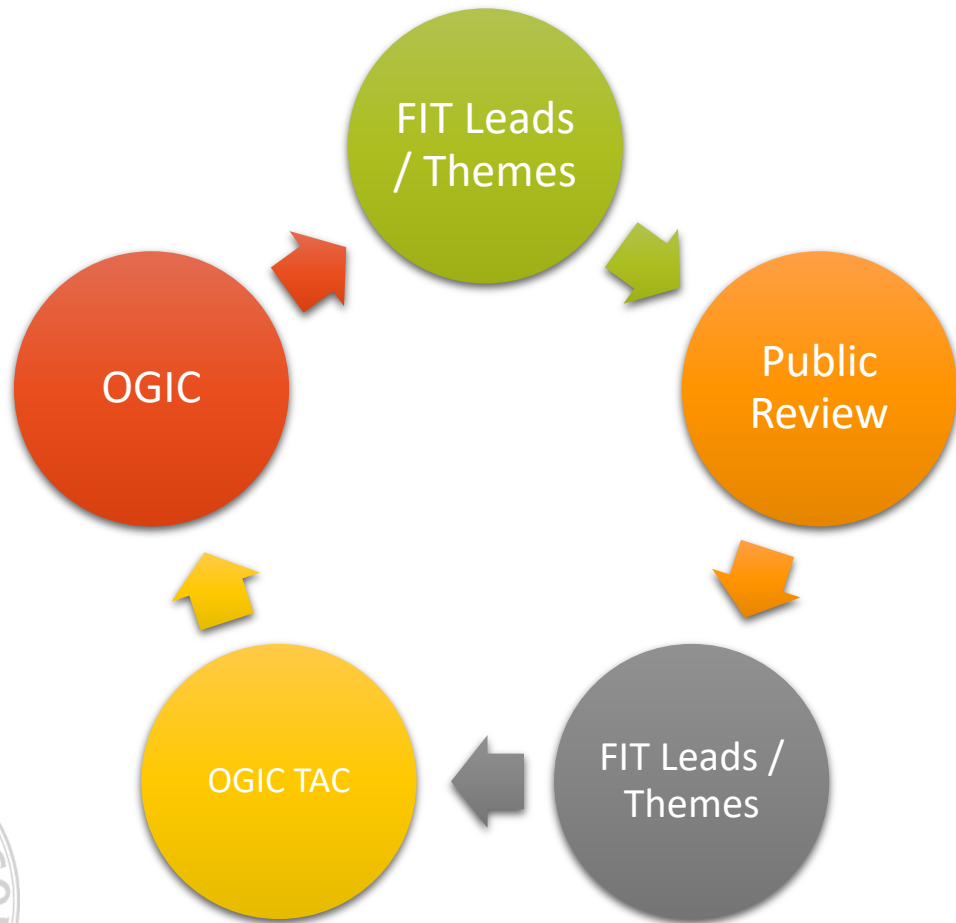
Spatial Data Library will be removed **December 31, 2023.**

The screenshot shows the Oregon Spatial Data Library website. At the top, the logo reads "Oregon SPATIAL DATA LIBRARY" with navigation links for Home, Download, Imagery, Help, About, and Feedback. Below the logo is a search bar with the text "Find Geospatial & Oregon Framework Data" and a search button. The main content area displays "503 data sets" with a "Show Framework data" checkbox, a "Sort by" dropdown set to "Newest first", and a "Show" dropdown set to "10". A pagination bar shows page 1 of 6. On the left, there are filters for Collections, Formats, Sources, and Topics. The Topics list includes: Admin Boundaries (34), Bioscience (69), Cadastral (13), Climate (11), Coastal and Marine (29), Elevation (43), Geodetic Control, and Geoscience (5). The main list of data sets includes: Oregon Urban Growth Boundaries - 2021, Oregon Enterprise Zones - 2022, Oregon Transportation Network - 2021, Oregon Fish Habitat Distribution - 2022, Oregon Tsunami Data Compilation 2022, and Oregon Average Annual Total Precipitation 1991-2020 (30 arc-second).



# Data Inventory & Dashboard

**\*\*Multiple Phases of Review & Approval**

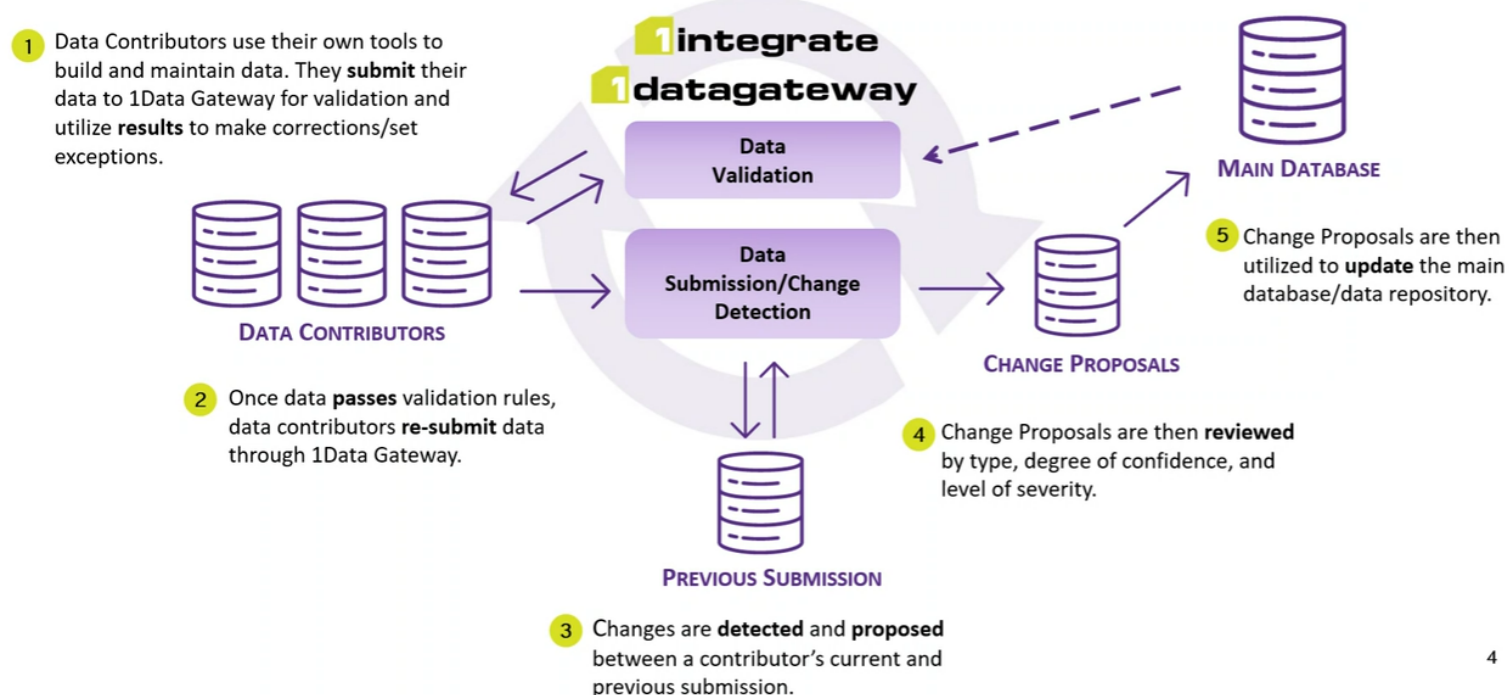




# QA/QC Tool: 1Spatial integrate & datagateway

- Recommended Solution: **1Spatial**
- Supports all Data Custodians
- Supports data aggregation of local data
- Best of FME and Best of Data Reviewer combined into a polished package

## An Automated Data Supply Chain within a Spatial Data Infrastructure

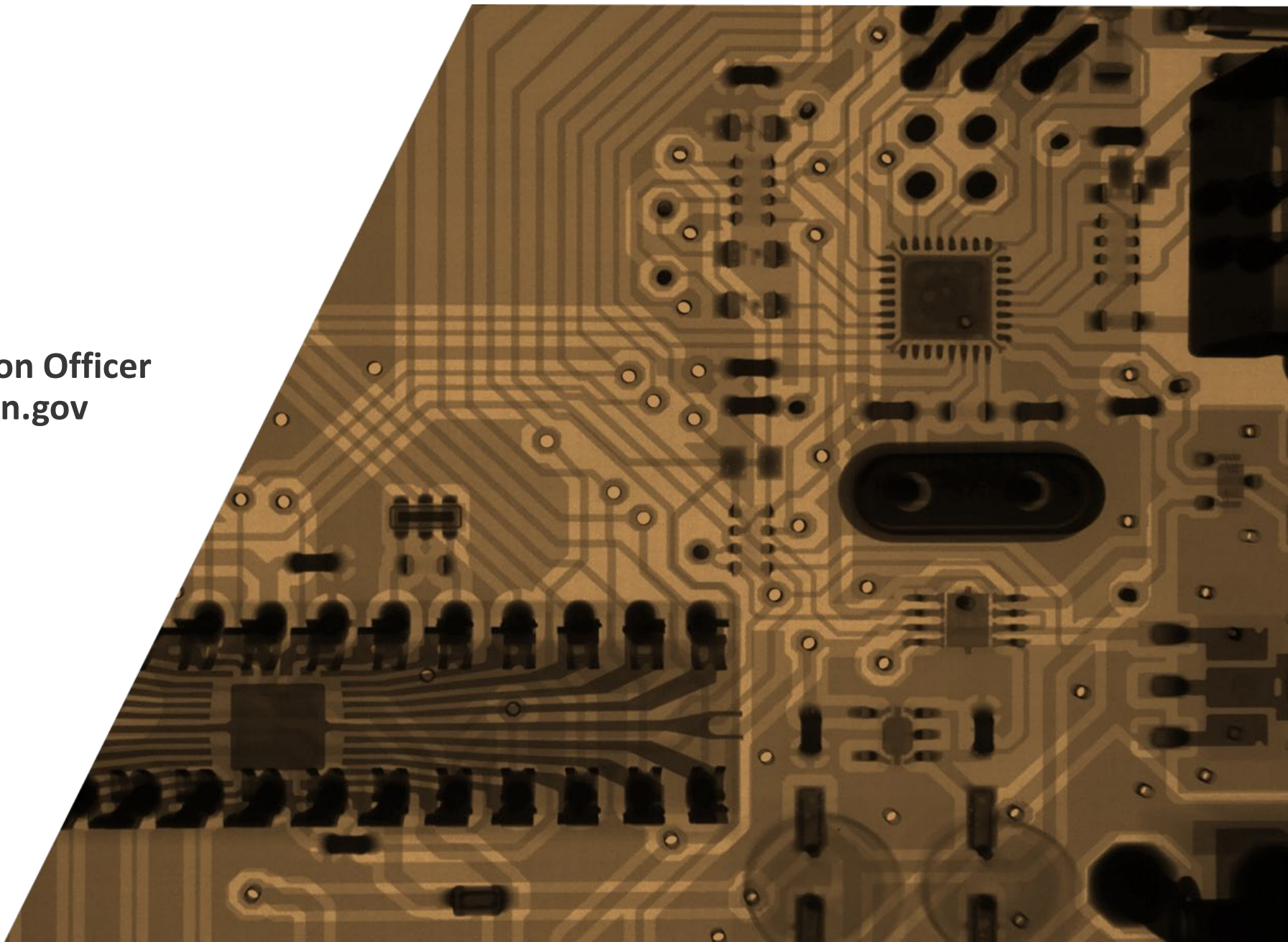


# Questions?

Rachel L. Smith

Oregon Geographic Information Officer

[rachel.l.smith@das.oregon.gov](mailto:rachel.l.smith@das.oregon.gov)



# Key Definitions: Public Body



## Public Body

*“has the meaning given that term in ORS 174.109 (ORS 276A.500 (6))”*. Public body means state government bodies, local government bodies and special government bodies ([ORS 174.109](#)) [2001 c.74 §2].

### State Government Body

is defined in ORS 174.111 as the executive department, the judicial department and the legislative department. [2001 c.74 §3]

For more information on these definitions, see ORS 174.112-114.

### Local Government Body

is defined as all cities, counties and local service districts located in this state, and all administrative subdivisions of those cities, counties and local service districts (ORS 174.116). The definition of local service districts includes many specific district types.

Metropolitan service districts, also commonly referred to as regional governments, are included in ORS 174.116 (2)(h).

See ORS 174.116 for more information.

### Special Government Body

is defined in ORS 174.117 and includes commonly known special districts such as school districts and other specifically defined districts.

The definition of special government body includes public universities listed in ORS 352.002 including:

- University of Oregon
- Oregon State University
- Portland State University
- Oregon Institute of Technology
- Western Oregon University
- Southern Oregon University
- Eastern Oregon University

See ORS 174.117 for more information.