

Minutes of Oregon Geoscience Framework Group

- meeting of November 14, 2002 -

Attendees:

Fred Lissner, OWRD

Teresa Gaffney, Tillamook Co.

Sharon Clarke, OSU Forest Science

Margi Jenks, DOGAMI

Denny Seymour, BLM

Paul Staub, DOGAMI

A list of five considerations regarding development of a 1:100,000 geologic data standard was distributed for discussion. Discussion highlights are summarized under each item:

1) - *Standards for the Oregon Framework Geology theme must facilitate statewide development of the best available geologic map data, assembled in edge-matched tiles with consistent content and format.*

>the national standard being developed (North American Digital Geologic Map Data Model, NADM) is designed to be a catalog of separate, digitized geologic maps. Some state variants of the national model are designed more to be statewide databases of geologic map data collected in edgematched tiles. This concept and other state and national models will be further explored in coming meetings.

2) - *What is the user base for the Oregon Geologic Framework theme and what is the assumed data handling experience of these anticipated users?*

>discussion drifted into data resolution and map generalization. The group expressed a strong desire to access the most detailed geologic information available, though the standard being developed is for statewide information at 100K scale.

>of Oregon's 1900+ 7½' quadrangles, about 200 have the geology mapped.

>a separate dataset of 7½' quadrangle geology is desired, or at least an index of available large scale geologic mapping.

>the statewide 100K geology database will contain Source I.D. fields assisting users to determine the most detailed information available and planning is underway to make this data available on the DOGAMI website in the future.

3) - *What standards components can realistically be endorsed for the near-term, and the long-term?*

>lithology information must be included in the content standard for statewide geologic data.

4) - *The DOGAMI geologic mapping team must sign off on the geology theme standard developed by the Geoscience Workgroup*

>some concern was expressed regarding this concept. However, considerable discourse between the Geoscience Workgroup and the DOGAMI mapping team is anticipated as usability tests are performed on the standard (see flowchart on next page).

5) - *Should cartographic symbolization be included in the standard?*

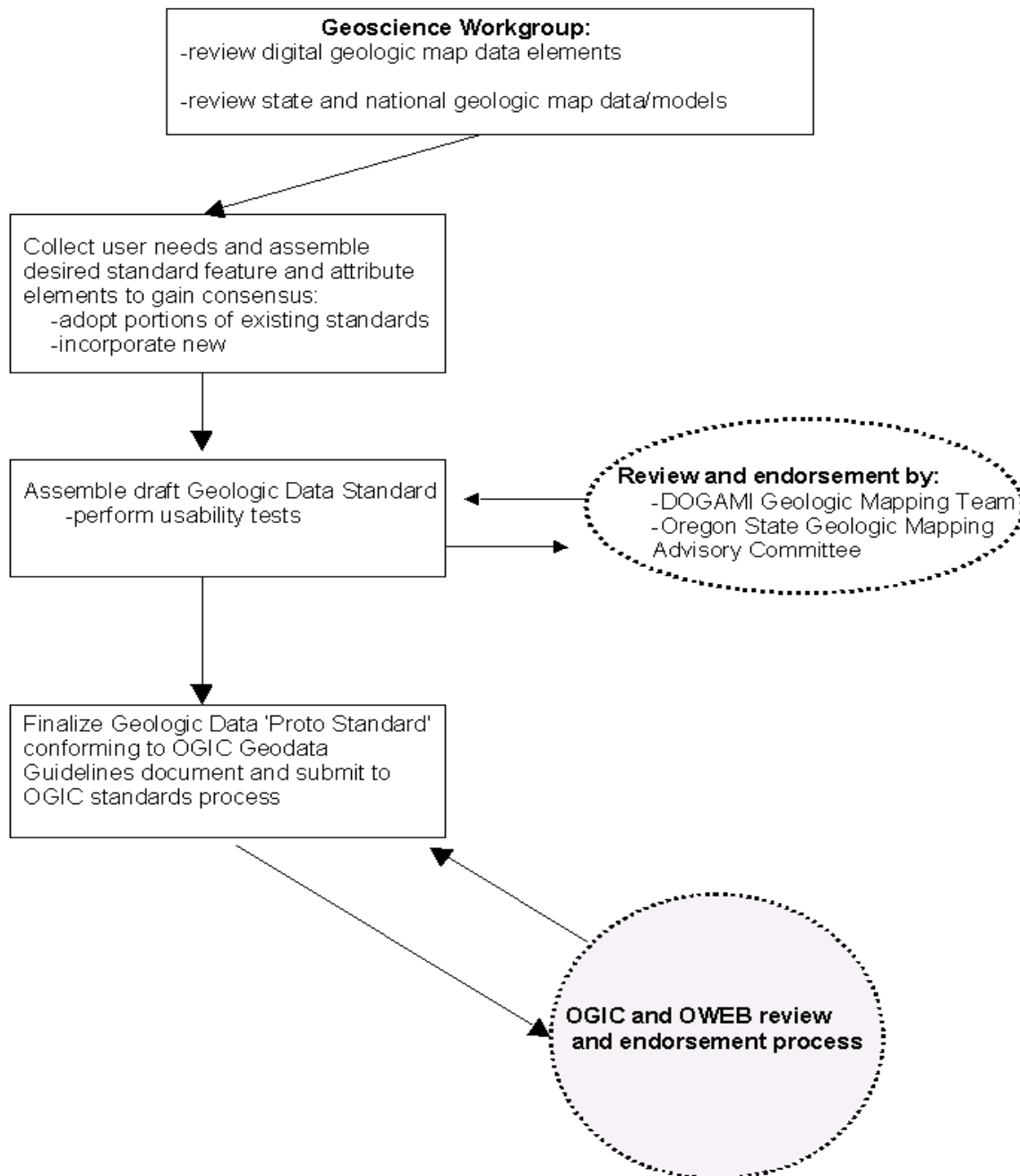
>the Oregon standard will incorporate the Digital Cartographic Standard for Geologic Map Symbolization developed by USGS and others. This is about to

be submitted to FGDC for approval. Web link is:
(http://ncgmp.usgs.gov/fgdc_gds/mapsymb/mapsymbpubrev.html)

A suggestion was made to perform an information needs assessment for the Geology theme. In this context, it was noted that the NADM committee is involved in a conceptual requirements analysis, web link is
<http://geology.usgs.gov/dm/steering/teams/design/UseCasesFINAL.html>.

The following flowchart was distributed for discussion:

DEVELOPING A GEOLOGY FRAMEWORK STANDARD FOR OREGON



11/02

The meeting finished with a brief look at DOGAMI digital geologic map elements, both the graphical and database information.

Plans for the next meeting include a presentation by Loudon Stanford of the Idaho Geological Survey. Loudon has served on the national committee developing the NADM and has led development of the Idaho Variant of the NADM.