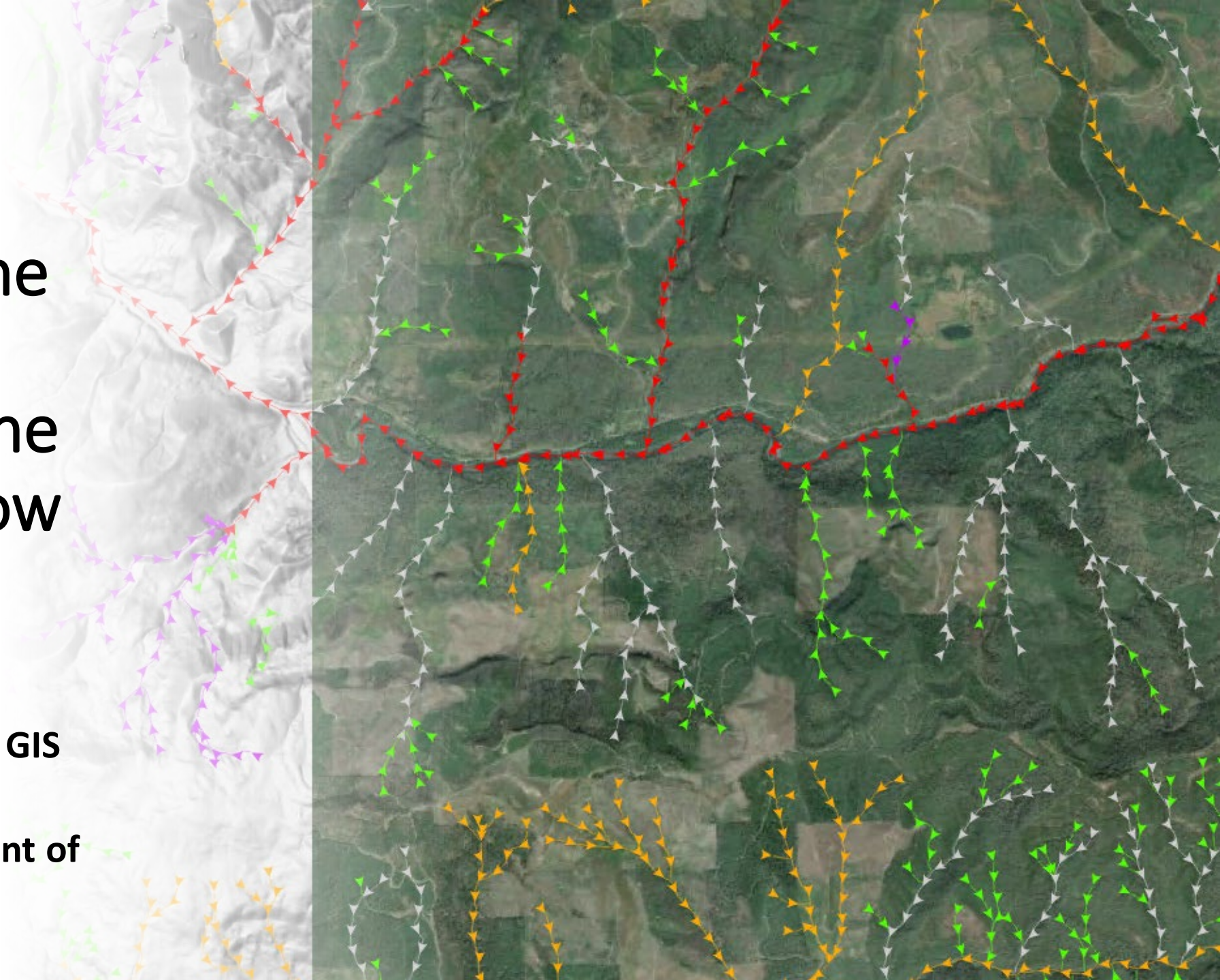
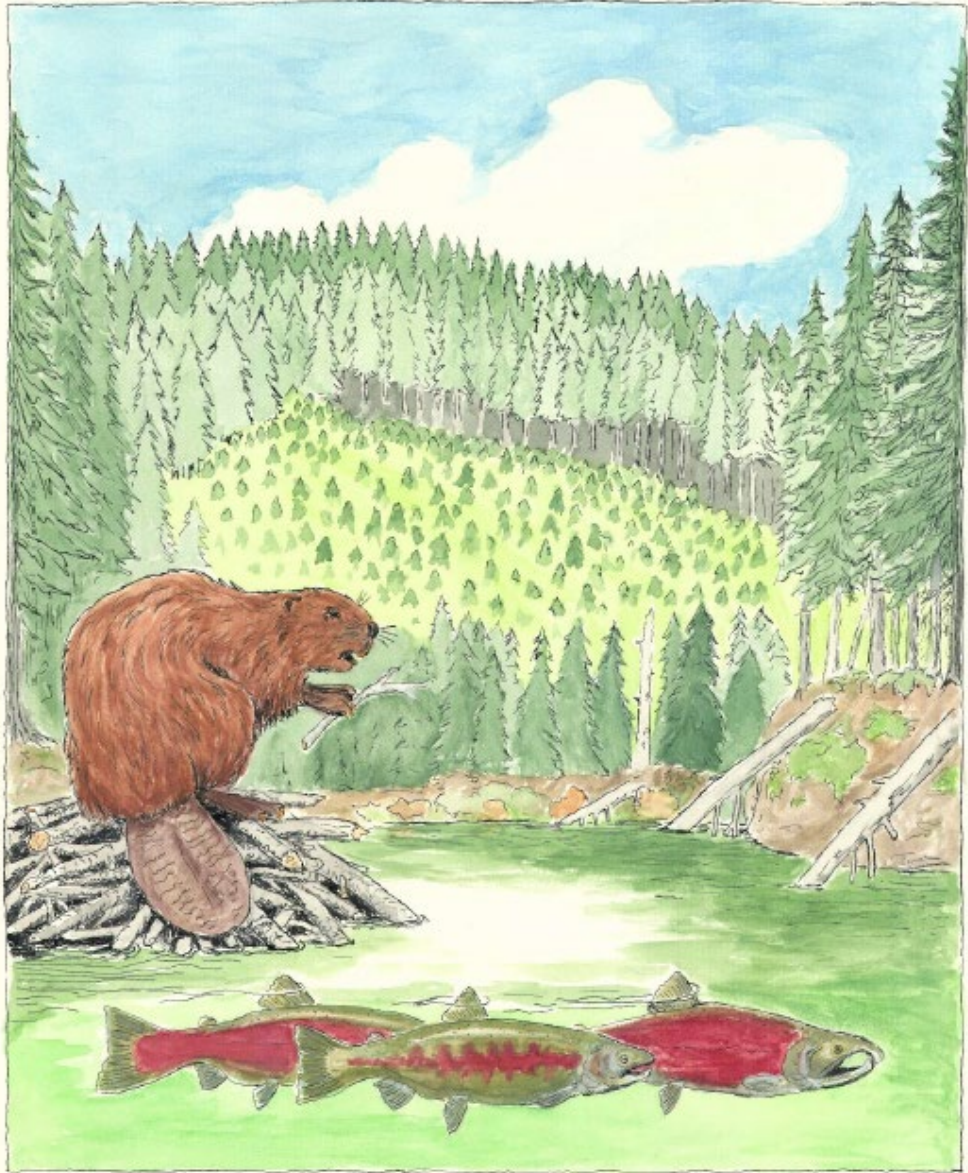


# Going with the Flow: Developing the Statewide Flow Line Dataset

**Arthur Rodriguez, GIS  
Coordinator**

**Oregon Department of  
Forestry**





# Private Forest Accord

---

- Negotiation between timber and conservation groups
  - Forest road management
  - Compliance monitoring
  - Mitigation programs
- Increased stream protections around fish habitat

# The Map Request

---

- “Develop and maintain statewide hydrography on private forest lands based on the highest-resolution digital elevation models...”
- “A map will be developed by TerrainWorks to identify Type F streams based on... [the Fransen] fish distribution model...”
- “...map ... will be modified to incorporate historical ‘ODF End of Fish’ information obtained from physical habitat surveys or direct sampling of fish presence, subject to a quality assurance and quality control review where data are available.”
- Final data must be available in FERNS on July 1, 2023

# Primary Collaborators

---

- Oregon Department of Forestry
- Oregon Department of Fish and Wildlife
- TerrainWorks

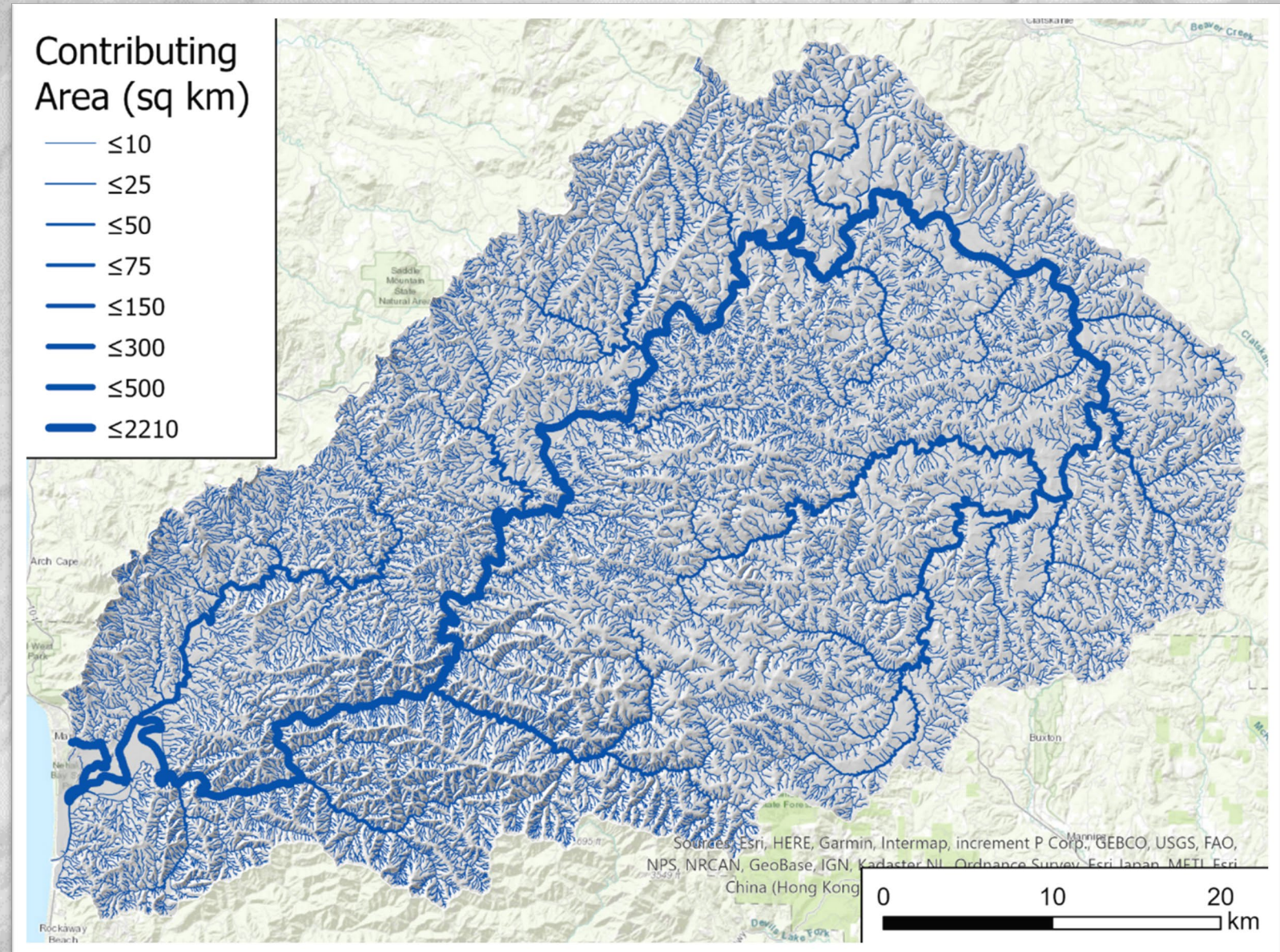


Terrain  Works

# Statewide Hydrography and Fish Model

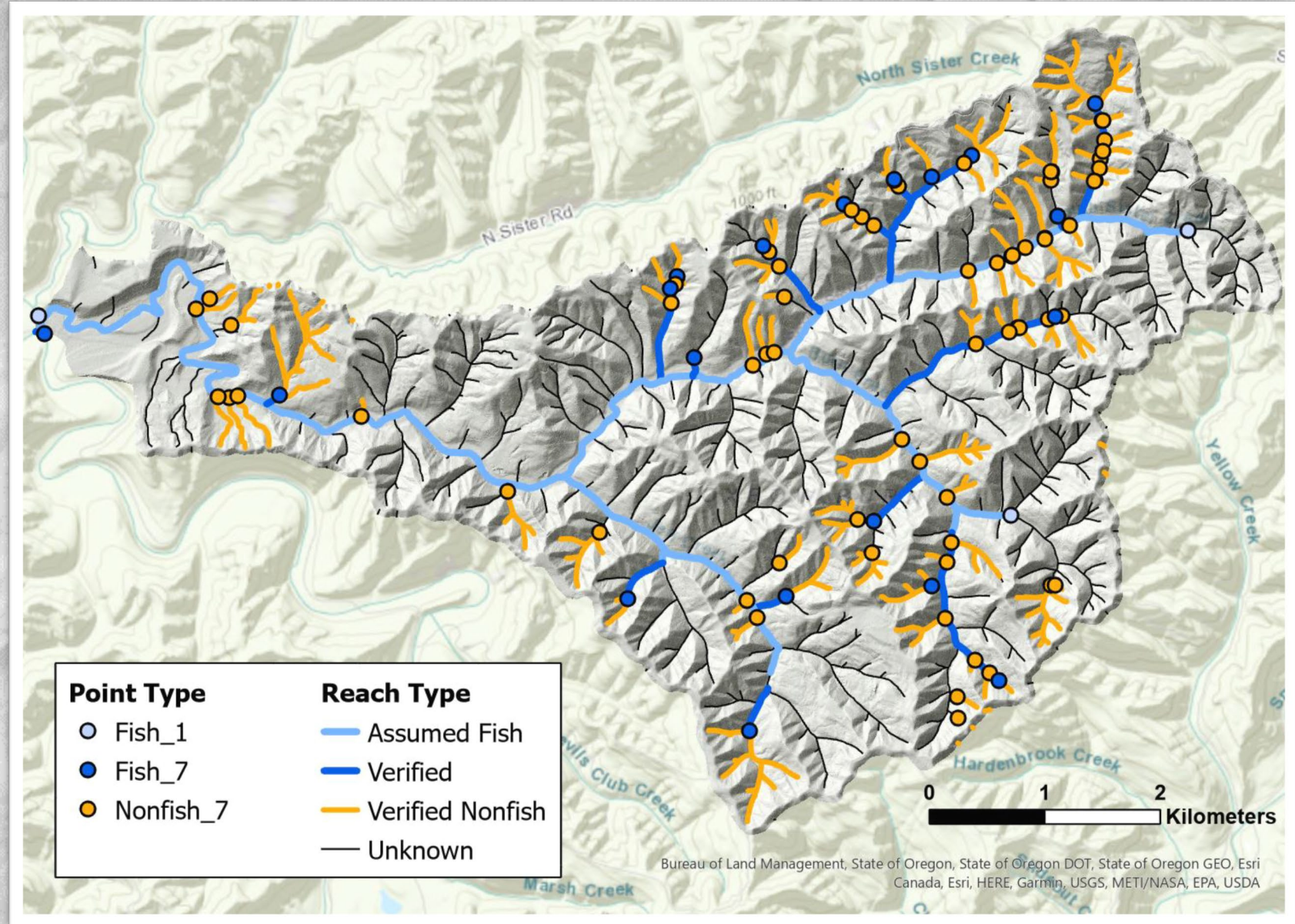
Synthetic Stream Network potential calculations:

Drainage area; Elevation; Stream width, depth, order, classification, flow; Precipitation effects; **Fish habitat**, Floodplain width; Climate change predictions



# Incorporate Historic Fish Surveys

- Convert ODF Streams to “End of Survey Points”
- Conflate ODF Survey points to Synthetic Stream Network



# Conflation

Contents

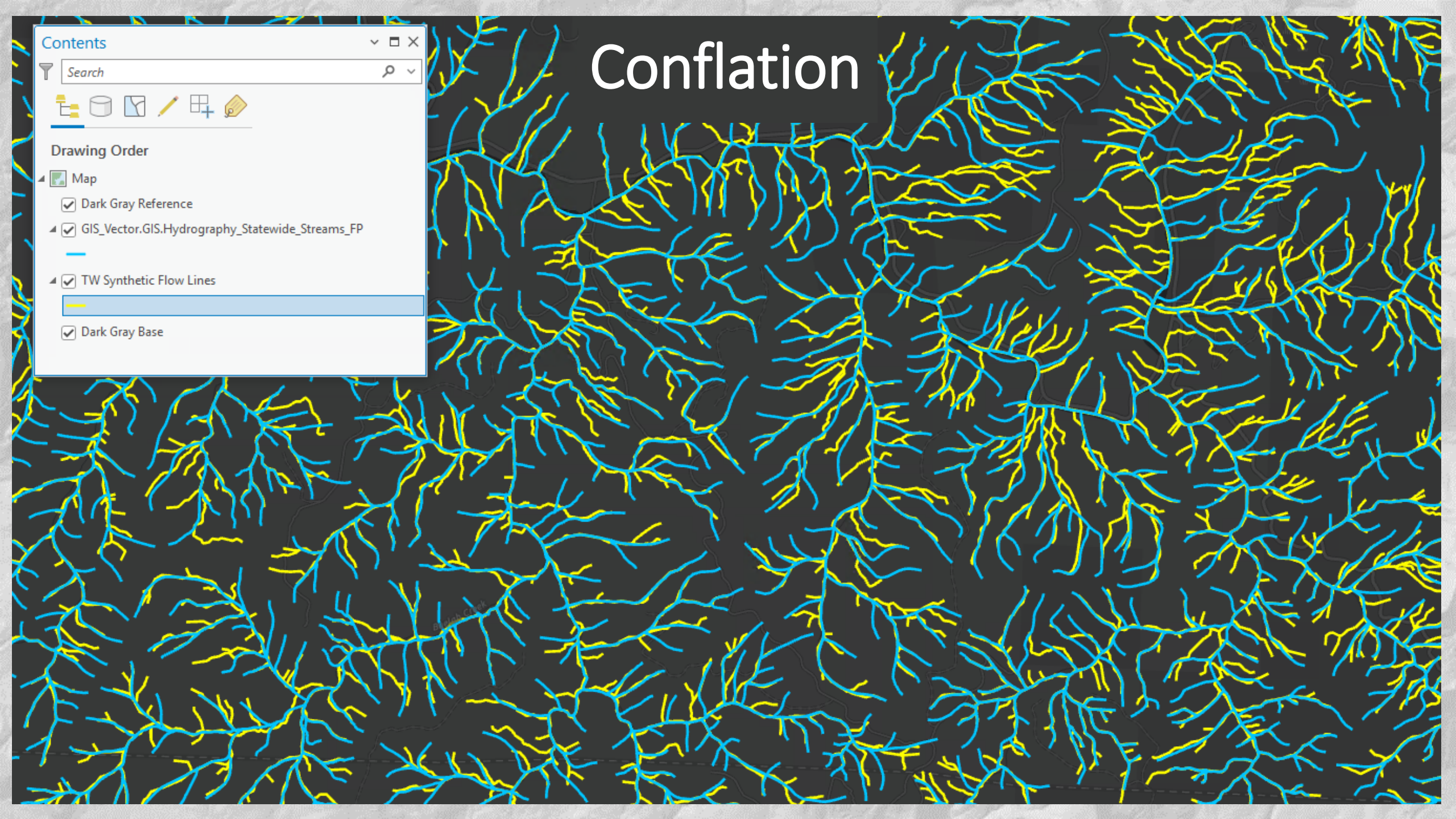
Search

Dark Gray Reference

GIS\_Vector.GIS.Hydrography\_Statewide\_Streams\_FP

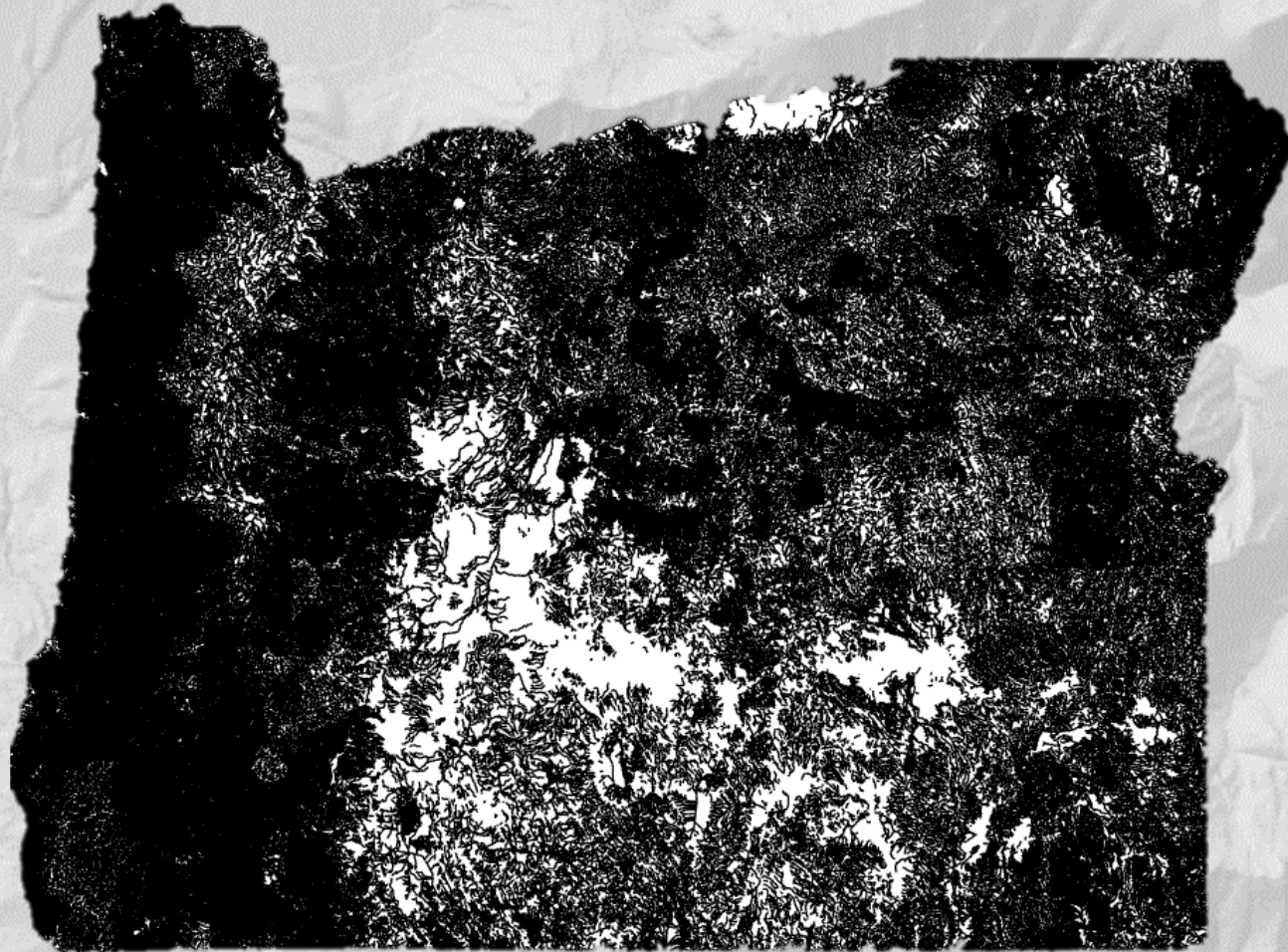
TW Synthetic Flow Lines

Dark Gray Base



# Data Cleanup

---

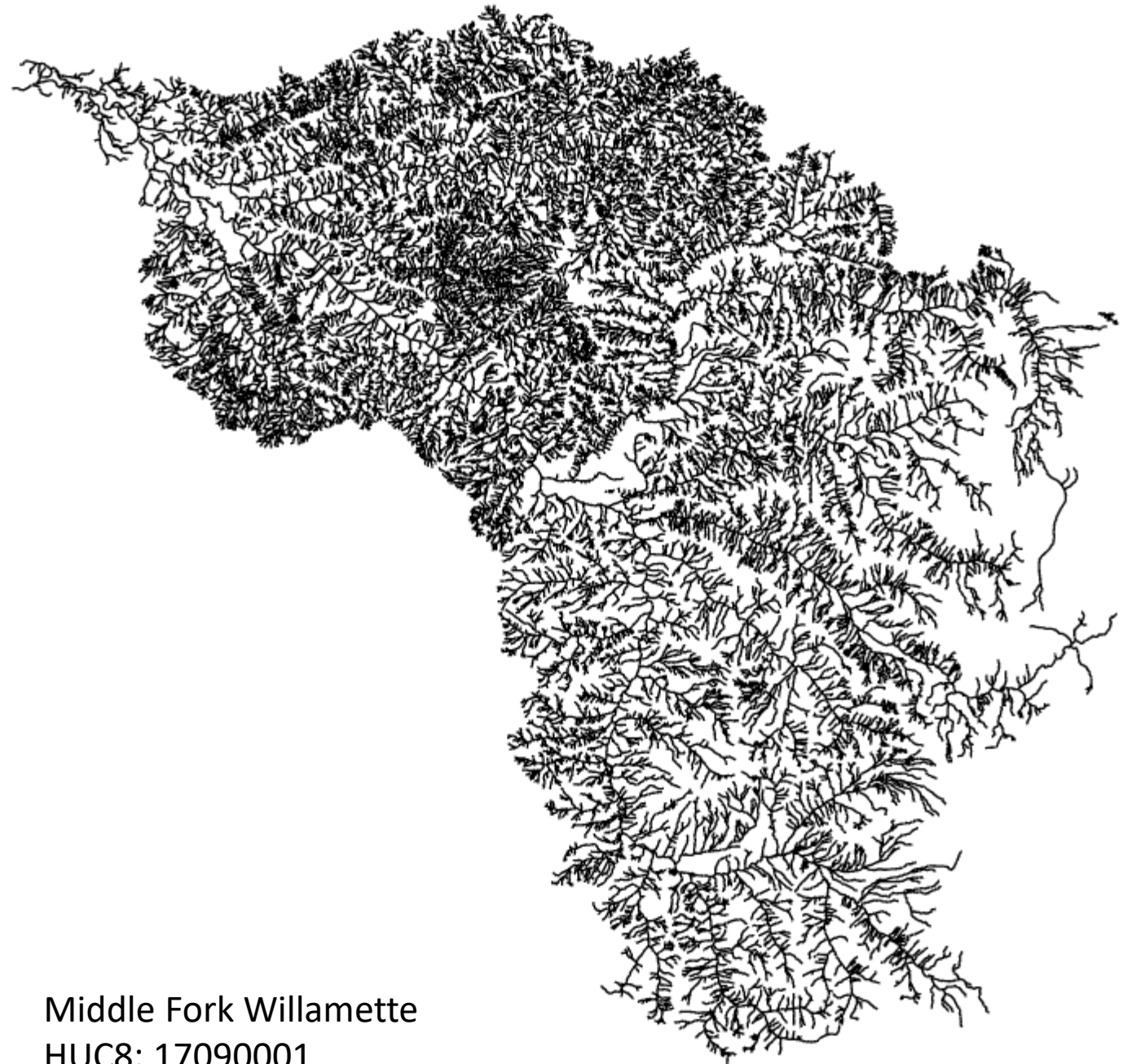




# Data Cleanup Workflow

---

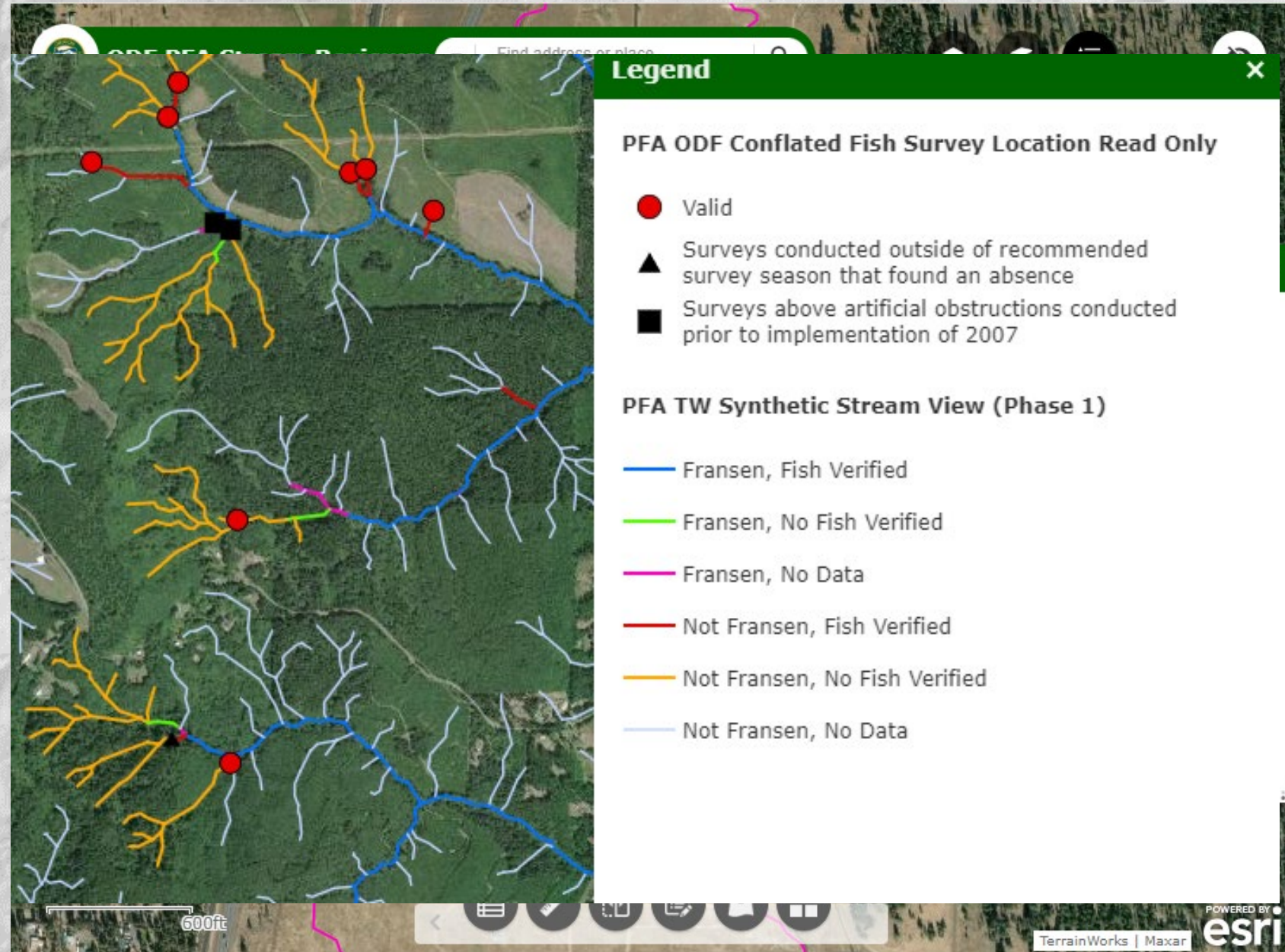
- Create Replica from Enterprise Feature Class
- Topology Rules
  - Must not intersect
  - Must not self-intersect
  - Must be single part
  - Must not be dangles
- Trace Network
- Check-in Replica



Middle Fork Willamette  
HUC8: 17090001

# Data Review: Phase 1

- ODF: Web application to allow multiple programs and staff to review geometry and initial conflation
- ODFW: Provide editable feature service to validate historic surveys



# Data Review: Phase 2

---

- Contract requirements: Check 20% of streams and ensure a 90% conflation success rate
- Condensed Timeline
  - Automated selection of streams to check
  - Streamline review in ArcGIS Pro
  - Ability to add new staff quickly

Project **Map** Insert Analysis View Edit Imagery Share Feature Layer Labeling Data

Clipboard: Paste, Cut, Copy, Copy Path

Navigate: Explore, Bookmarks, Go To XY

Layer: Basemap, Add Data, Add Graphics Layer

Selection: Select, Select By Attributes, Select By Location, Clear, Zoom To

Inquiry: Measure, Locate, Infographics, Coordinate Conversion

Labeling: Pause, Lock, View Unplaced, Convert, More

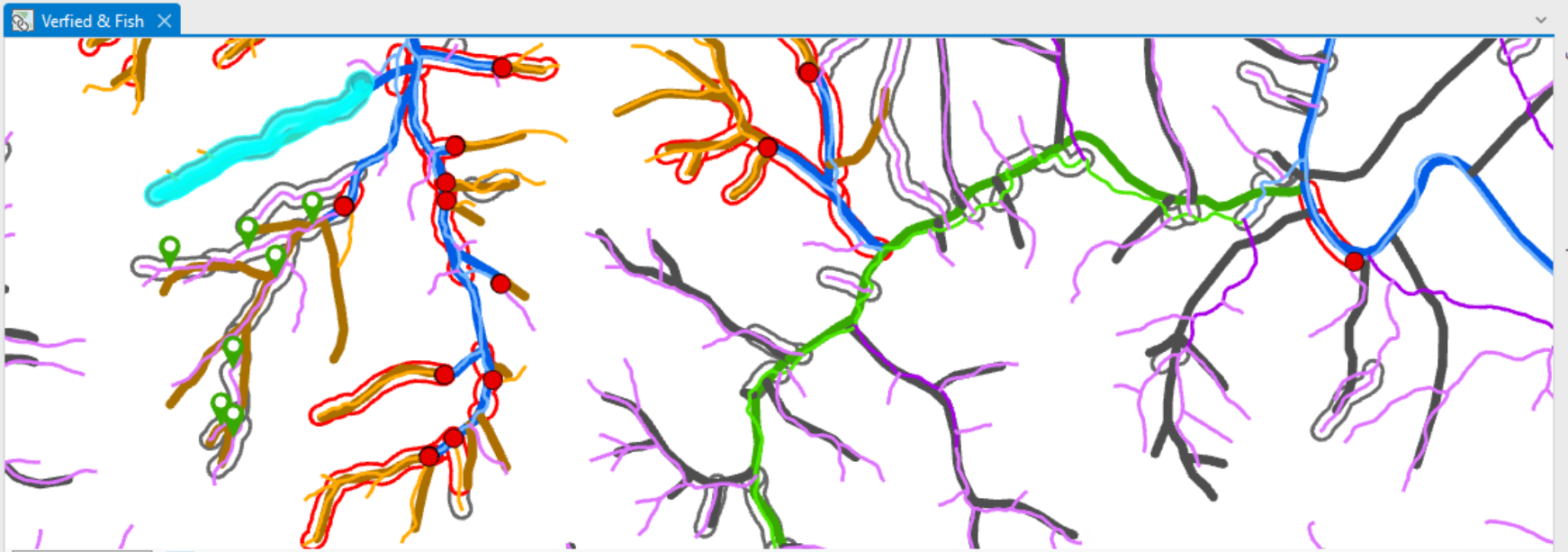
Offline: Download Map, Sync, Remove

**Contents**

Search

**Drawing Order**

- Verified & Fish
  - Streams
    - Phase2ReviewComments
      - Phase 2 Review Comments
    - Revised Conflated ODF Fish Survey point
      - Valid
      - Surveys conducted outside of recommende
      - Surveys above artificial obstructions conduct
      - Fransen goes higher than assumed (Fishpres
      - Conflation point location is incorrect
  - TW Synthetic Flow Lines
    - Fish Presence - Verified Fish
      - Assumed - Fish
      - Dphys - Fish
      - Verified - Fish
      - Fransen - Fish
      - Dpyhs - Non-Fish
      - Verified - Non-Fish
      - Fransen - Non-Fish
    - ODF Statewide Streams
      - Fish Presense - Verified Fish
        - Assumed - Fish
        - Dphys - Fish
        - Verified - Fish
        - Dphys - Non-Fish



1:12,519 123.9843268°W 44.8386117°N Selected Features: 3

ODF Statewide Streams

Field: Add Calculate Selection: Select By Attributes Zoom To Switch Clear Delete Copy Unselect Reselect Zoom To Switch Clear

| Verified Fish Source | Verified Fish Modification Date | Verified Fish Record Modifier | Duration | Verified Duration Modification Date | Fish Barrier | Fish Barrier Year | Continuity | Fish Presence Modification Date | Fish Presence Rec |
|----------------------|---------------------------------|-------------------------------|----------|-------------------------------------|--------------|-------------------|------------|---------------------------------|-------------------|
| 1 Landowner          | 20110620                        |                               | Seasonal | <Null>                              | <Null>       | <Null>            | Continuous | 8/6/2012                        | Dt                |

1 of 1,224,805 selected Filters: 90%

TW Synthetic Flow Lines

Field: Selection: Highlighted:

| Verified Fish Source | Verified Fish Modification Date | Verified Fish Record Modifier | Duration | Verified Duration Modification Date | Fish Barrier | Fish Barrier Year | Continuity | Fish Presence Modification Date | Fish Presence Rec |
|----------------------|---------------------------------|-------------------------------|----------|-------------------------------------|--------------|-------------------|------------|---------------------------------|-------------------|
| 1 Landowner          | 20110620                        |                               | Seasonal | <Null>                              | 0            | 0                 | Continuous | 8/6/2012                        | Dt                |

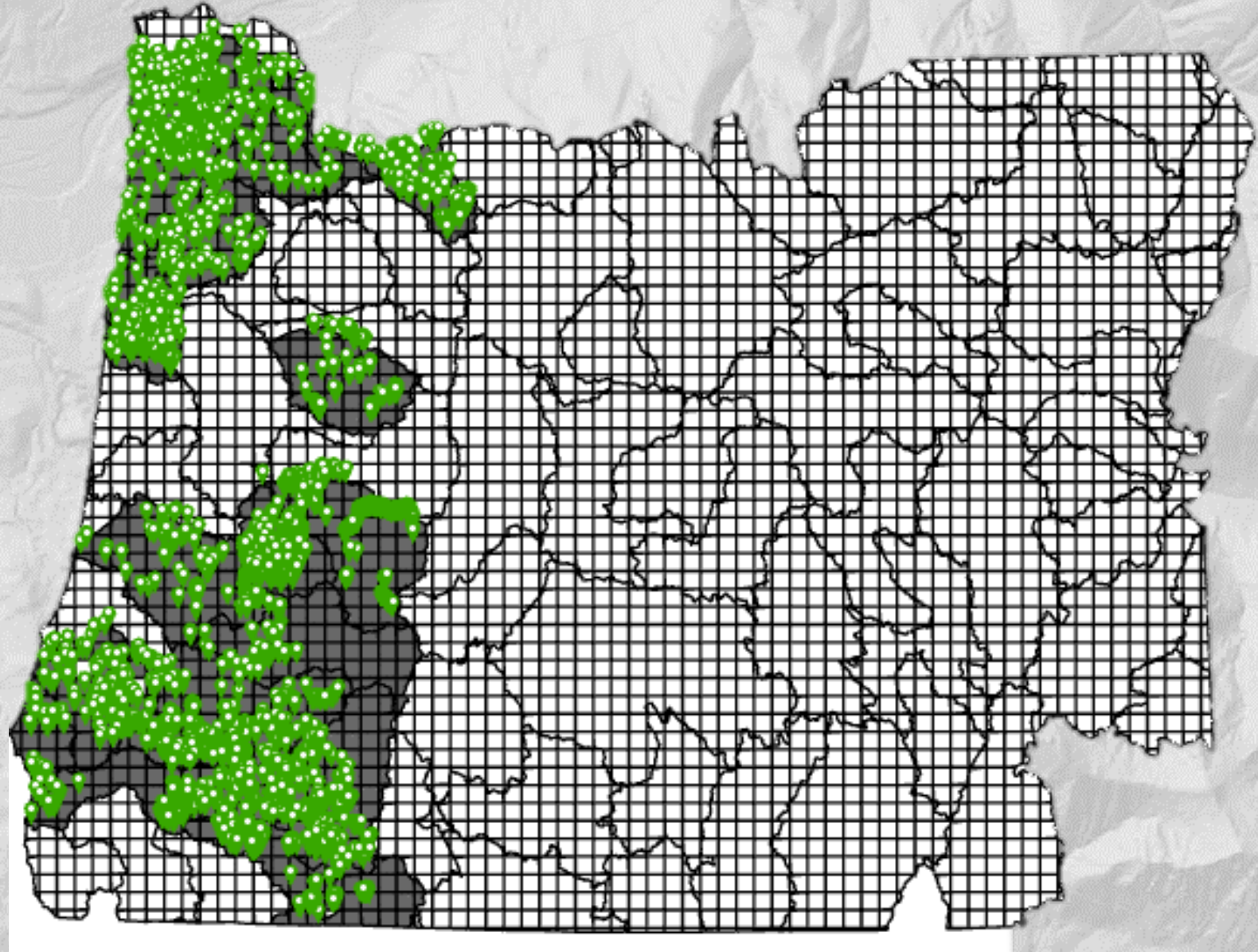
1 of 2,077,178 selected Filters: 90%

Catalog Bookmarks Chart Properties Label Class Create Features Modify Features Geoprocessing Symbology Raster Function

# Project Tracking

---

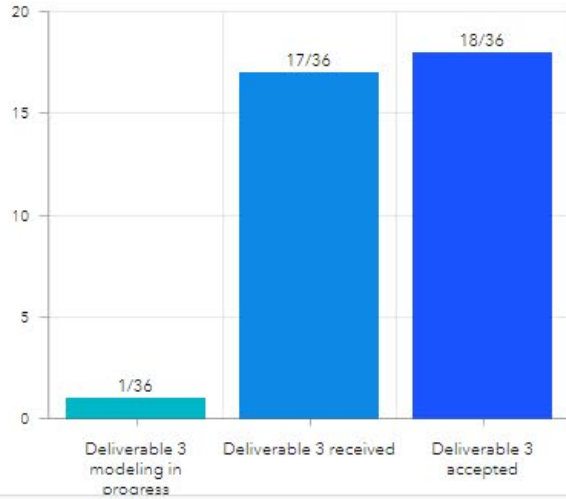
- Review Feature Services
- Project Dashboard



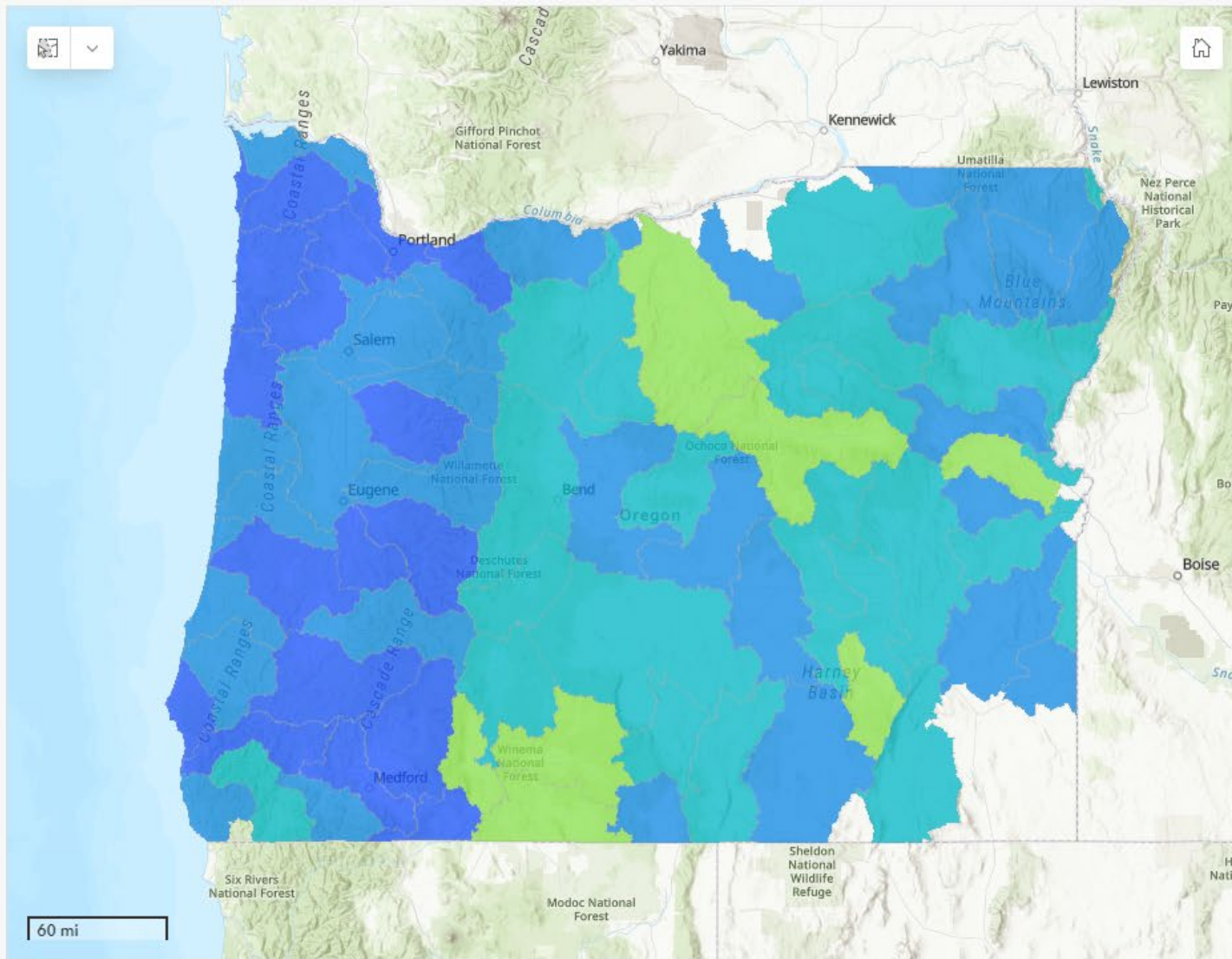
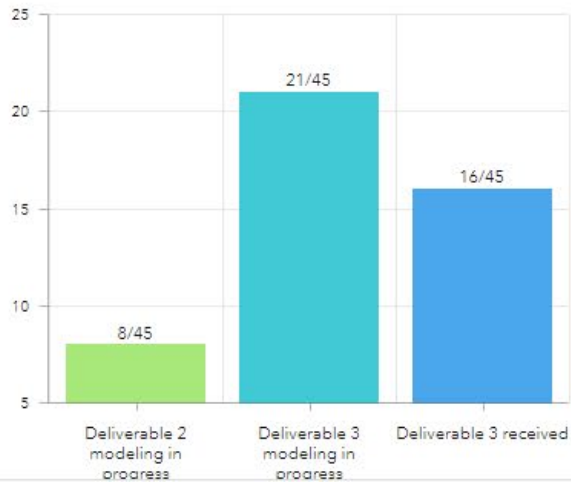


## ODF PFA Streams Watershed Tracking Dashboard

### Western Oregon Area Watershed by Status



### Eastern Oregon Area Watershed by Status



Esri, USGS | County of Crook, Oregon State Parks, Esri, HERE, Garmin, FAO, NOAA, USGS, Bureau of Land Management, EPA, NPS | Funding for the ... Powered by Esri

### PFA Watershed Status

- ODF data prep
- Deliverable 2 modeling in progress
- Deliverable 2 received
- Deliverable 3 modeling in progress
- Deliverable 3 received
- Deliverable 3 accepted
- Deliverables 4-6 received
- All deliverables accepted

**Deliverable 2:** An initial attributed synthetic stream dataset delineated using highest resolution digital elevation model available. Attributed data will include information from current ODF stream product, including location of the end of fish use from ODF field surveys. Data will be reviewed by ODF and ODFW before being accepted.

**Deliverable 3:** Final synthetic stream dataset using feedback from Deliverable 2 and will include ALL stream reach attributes as required in the PFA report. Data will be reviewed by ODF and ODFW before accepting as final stream data.

**Deliverables 4-6:** Modeling outputs generated based off of streams accepted in Deliverable 3 including landslide and debris flow susceptibility, sediment source areas, and Trigger Sources for high volume debris flow. \*Note that per the PFA these products

Del. 2  
**8/81**

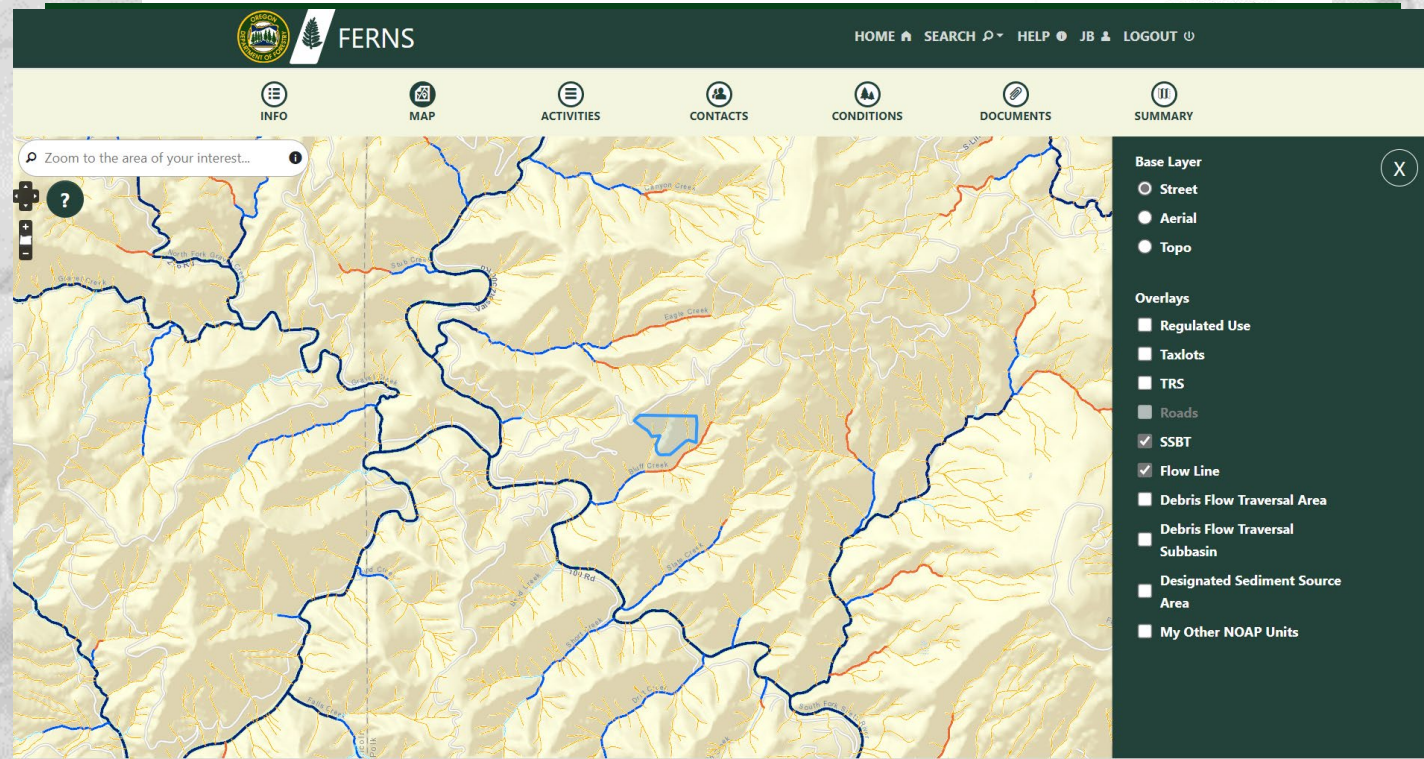
Del. 3  
**55/81**

Del. 4-6\*  
**18/36**

Accepted  
**0/81**

# Flow Line Data Released on July 1, 2023

- Data management considerations
- Public data access
- Incorporating data into rules and required processes



# Unique Challenges

---

- Transitioning modeled information into a regulatory dataset
  - Maintaining complex attributes
  - Flow Line accuracy
  - Compiling information
- Standardizing the data update process
  - Survey collection
  - Review process
  - Tracking

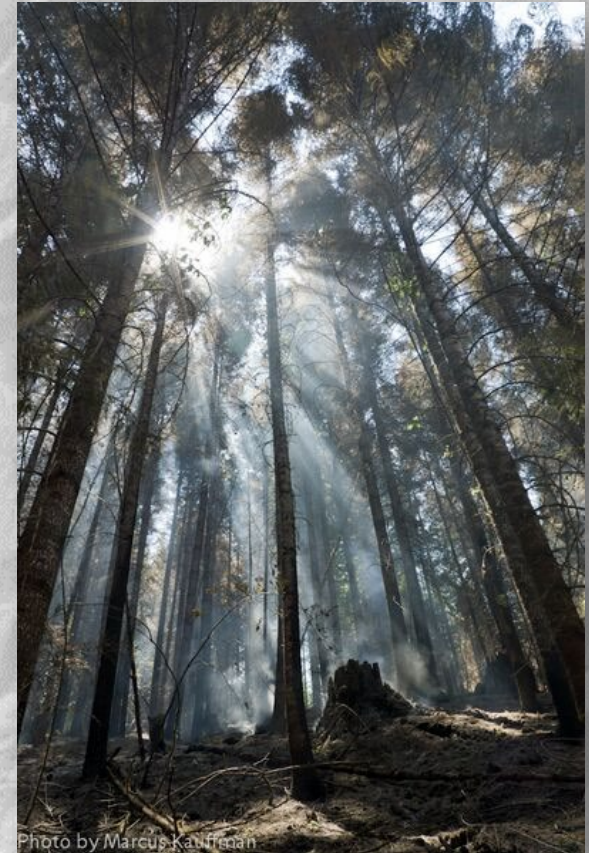


Photo by Marcus Kauffman



# Lessons Learned

---

- Standardized workflows
- Take advantage of new technologies
- Specific contract requirements
- Need for more GIS input in legislative process



# Thank you....

- ODF
  - GIS Unit, Forest Resources, State Forests
- ODFW
- TerrainWorks

[arthur.rodriguez@odf.oregon.gov](mailto:arthur.rodriguez@odf.oregon.gov)

<https://oregon-department-of-forestry-geo.hub.arcgis.com/>

