

Oregon Recreation Data and Trail Data Standards

Update from the Recreation Data Workgroup

Presented by
Brady Callahan

Oregon Parks and Recreation Department



Oregon Framework Forum Fall 2023



Recreation Framework Data Elements

Recreation Data
Standard Focus

Trail Data
Standard Focus

Framework Element	Framework Theme
State park boundaries	Admin Boundaries
National memorials, parks, scenic areas	Admin Boundaries
Recreation sites	Land Use/Land Cover
Monuments/Icons	Preparedness
Trails	Transportation



Existing
Data/Standards
Review

FGDC
Recreation.gov
PAD-US
Oregon SCORP
USFS
BLM
NPS
OSU

Bend Parks and Rec
Metro
Benton County
City of Corvallis
National Parks and Recreation Association
Oregon State Parks
Oregon Department of Forestry
Oregon State Marine Board

Recreation Data Standard – Draft Released

The screenshot shows the Oregon Geospatial Enterprise Office website. The navigation bar includes links for Home, GIS data, GIS communication, GIS coordination, Framework, GIS standards (highlighted), Open Data Portal, and Contact us. The main heading is 'Oregon GIS data standards and best practices'. A sidebar on the left lists navigation options: GEO HOME, GIS DATA AND SERVICES, GIS COMMUNICATION, GIS COORDINATION, GIS STANDARDS (selected), and CONTACT US. The main content area is titled 'OGIC Endorsed Data Standards' and lists categories: Address Points, Administrative boundaries, Bioscience, and Cadastral. A red circle highlights the 'Draft Standards for Public Review and Comment' section, which states that the following data standard is open to public comment until November 20, 2023. The highlighted section lists 'Oregon Recreation' and 'Oregon Recreation Comment Log' as draft standards. It also provides contact information for public comments: Send public comments to Melissa.FOLTZ@das.oregon.gov.

Oregon Geospatial Enterprise Office

Oregon GIS data standards and best practices

[GEO HOME](#)

[GIS DATA AND SERVICES](#)

[GIS COMMUNICATION](#)

[GIS COORDINATION](#)

▶ GIS STANDARDS

[CONTACT US](#)

OGIC Endorsed Data Standards

Address Points:

- [FGDC standards](#)
- [NENA Civic Location data Exchange Format \(CLDXF\) Standard](#)

Administrative boundaries:

- [Administrative Boundaries Standard, v2.0](#)
- [Comprehensive Plan Designations Data Standard](#)
- [Zoning Extension to Administrative Boundaries Standard v1.0](#)

Bioscience:

- [Oregon Fish Habitat Distribution Data Standard, v4.0](#)
- [Fish Passage Barrier Standard, v 1.1](#)
- [Wetland Mapping Standard, v2.1.1](#)

Cadastral:

Draft Standards for Public Review and Comment

This following data standard is open to public comment until **November 20, 2023**.

- [Oregon Recreation](#)
- [Oregon Recreation Comment Log](#)

Send public comments to
Melissa.FOLTZ@das.oregon.gov

Draft Standards in Review by OGIC Technical Advisory Committee

Recreation Data Standard

Outdoor Facilities vs Activities



Generally a Facility would be a man-made structure or amenity that is used for an Activity



- Facilities: boat ramp, playground, interpretive display



- Activities: fishing, paddling, dog walking, bird watching

- Recreational activities occur on/at a facility
- Facilities have physical characteristics, location, dimensions

Recreation Data Standard Hierarchy

Features are meant to include spaces and infrastructure that intentionally support current and future outdoor recreational activities



Park, Historic Area, Forest,
Recreation Area, Natural
Area, Wildlife Area, School

Polygon



Campground, Trailhead,
Boating Facility, Day Use
Area, Recreation Site, Historic
Site

Point
[Polygon optional]



Campsite, Parking, Boat
Ramp, Picnic Shelter,
Diamond Field, Playground,
Restroom, Pool

Point



Trail Data Standard



Trail Data Standard

FGDC 2011 Adopted/ Federal Trail GIS Schema (FTGS) 2021



https://www.usgs.gov/national-digital-trails

An official website of the United States government [Here's how you know](#)

USGS
science for a changing world

SCIENCE PRODUCTS NEWS CONNECT ABOUT

Latest Earthquakes |

National Digital Trails

Connecting trails to expand recreational opportunities on the Nation's public lands.

HOME

DATA

NEWS

CONNECT

PARTNERS

The National Digital Trails Network project was developed in response to the Department of Interior's (DOI's) vision to expand recreational opportunities on the Nation's public lands.

https://www.usgs.gov/national-digital-trails/update-federal-trails-schema

An official website of the United States government [Here's how you know](#)

USGS
science for a changing world

SCIENCE PRODUCTS NEWS CONNECT ABOUT

Latest Earthquakes |

NATIONAL DIGITAL TRAILS

Update on Federal Trails Schema

By [National Digital Trails](#)

HOME

DATA

NEWS

CONNECT

PARTNERS

An interagency group has been working to create a Federal GIS Trail Schema based on the FGDC Federal Trail Data Standard. The schema is scheduled to be released by the end of 2023.

Exciting news! As many of you are aware, an interagency group has been working to create a Federal GIS Trail Schema based on the [FGDC Federal Trail Data Standard](#). The schema is scheduled to be released by the end of 2023. More information about the schema and links for downloading can be found on [the Federal Trail GIS Schema Working Group](#) page.

The schema was originally developed to help standardize digital trail data from [National Scenic and Historic Trails](#) (see image below) that stretch across the entire country through various federal, state, and private lands with many different managers interpreting and collecting trail information in different ways. The group created a trail schema based on their original needs and modified the schema in response to public feedback. Although not a requirement, adoption of a common schema will allow trail agencies and organizations to better share and understand public domain trail data.

We have a special interest in the common schema because it will allow us to more efficiently aggregate trail data into the USGS nationwide trails dataset.

The map shows a network of green lines representing trails across the United States. A legend on the right side of the map includes categories like 'National Scenic and Historic Trails' and 'National Digital Trails Network'.

Trail Data Standard

FGDC 2011 Adopted/ Federal Trail GIS Schema (FTGS) 2021



Core Attributes

Naming

Descriptors

Admin/Mgt

Feature level metadata

Attributes
Trail Name
Trail Alternative Name
Map Label
Trail Number
Trail Type
Trail Surface
Trail Class
Trail Use
Type of Route
Primary Trail Maintainer
Administrative Organization
Managing Organization
Agency Data Source
Edit Date
Map Method
XY Accuracy
Notes

Terra, Snow, Water

Asphalt, compacted soil, native material, etc.

Minimally Developed, Moderate, Highly, Fully

*Hierarchical, multi value, delimited

Road, Trail, Road/Trail

Trail Data Standard

FGDC 2011 Adopted/ Federal Trail GIS Schema (FTGS) 2021



Core Extended Attributes

Field Name
Designed Use
Managed Use
National Trail Designation
NHT NST Trail Number
NHT NST Trail Administrator
Historic Significance
NHT Certification Status
NHT Condition Category
NHT High Potential Segment
NHT Public Use Segment
NRHP Criteria
Shared System
Road System
State
YYYYMMDD Imported
Feature ID

Hiker/ped, Bicycle, ATV, Cross Country Ski, E Bike, Pack and Saddle, etc.

Multi value, delimited, from [Designed Use] list

*National
Historic Trails

Road, Snow Trail, Terra Trail, Water Trail

BLM Road, US Highway, FS Road, State Highway, Local, etc.

Trail Data Standard

Trail User Community Website Attributes



FGDC Match

Derived

Subjective

Source	Trail Type (Use Type)	Surface Type	Land Owner/ Manager	Dogs Allowed	Ebikes	Width	Distance	Elev Change	Seasonality	Route Type	Difficulty	Description	Rating	Time to hike	Services
onxmaps.com	1	0	0	0	0	0	1	1	1	0	1	1	1	0	0
MTBProject.com	1	1	1	1	1	1	1	1	1	1	1	1	1	0	0
traillink.com	1	1	0	0	0	0	1	0	0	1	0	1	1	0	0
alltrails.com	1	0	0	0	0	0	1	1	0	1	1	1	1	0	1
trailmeister.com	1	0	1	0	0	0	1	0	0	0	1	1	1	0	1
riderplanet-usa.com	1	1	0	0	0	0	1	1	1	0	1	1	1	0	1
trailforks.com	1	0	1	1	1	1	1	1	0	1	1	1	1	0	0
theoutbound.com	1	0	0	0	0	0	1	1	0	1	0	1	1	0	0
wikiloc.com	1	1	0	0	0	0	1	1	0	1	1	1	1	1	1
hikeoregon.net	1	0	0	0	0	0	1	1	0	1	1	1	0	0	0
fatmap.com	1	0	0	1	0	1	1	1	0	0	1	1	0	1	0
myhikes.org	1	1	0	1	0	0	1	1	0	1	1	1	1	1	0
greatruns.com	1	0	0	0	0	0	1	1	0	1	0	1	0	0	0
	13	5	3	4	2	3	13	11	3	9	10	13	10	3	4

Trail Data Standard

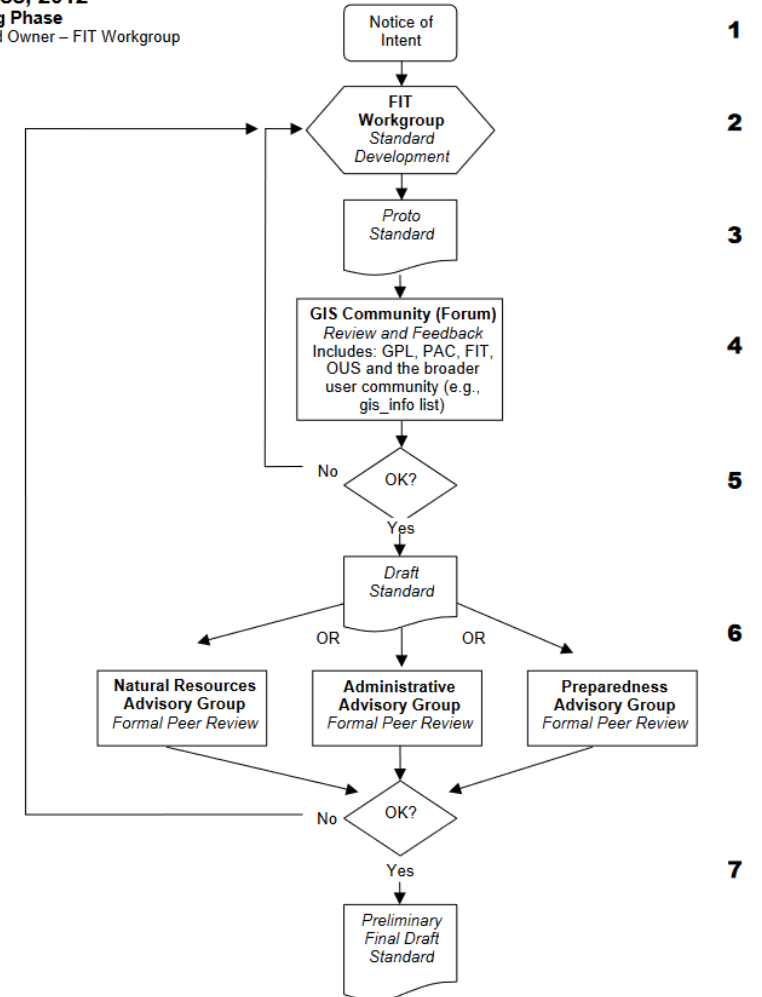
Next Steps



Workgroup

- Expansion with additional recreational trail providers
- Complete evaluation of Federal Trail GIS Schema
 - Specific attention to:
 - *Trail Class
 - *Trail Use
 - *Designed Use
 - *Managed Use
- Proto standard development

FIT Standards Development Process, 2012 Drafting Phase Standard Owner – FIT Workgroup



Questions?



Contact me: Brady.Callahan@opr.d.oregon.gov