

Oregon Spatial Data Library and Oregon Explorer Redesign Plans

Oregon Framework Forum

October 24, 2023

The Geospatial Enterprise Office has launched GEOHub, a new one-stop hub for geospatial Framework data and GIS resources. Go to [Oregon GEOHub](#) to locate, access, and download Oregon Framework Program data and related maps and apps. Questions? Contact Melissa Foltz melissa.foltz@dss.oregon.gov.



331 data sets Sort by: Newest first Show: 10

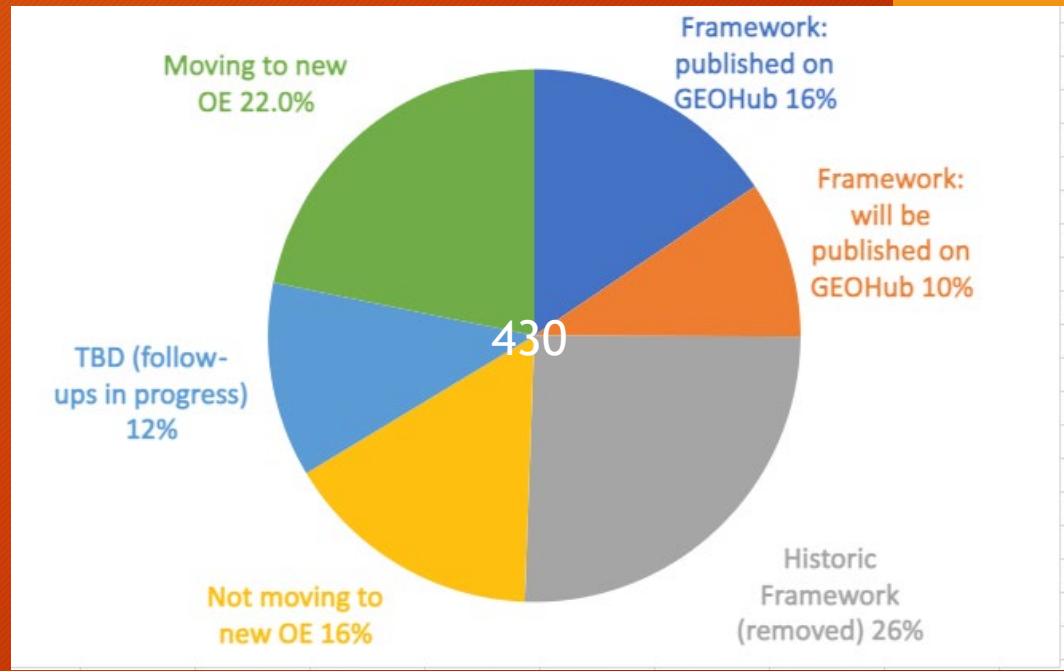
- Collections
- Formats
- Sources
- Topics
 - Admin Boundaries (10)
 - Bioscience (57)
 - Cadastral (4)
 - Climate (3)
 - Coastal and Marine (22)
 - Elevation (39)
 - Geodetic Control
 - Geoscience (1)
 - Hazards (6)
 - Hydrography (16)
 - Imagery
 - Land Use Land Cover (6)
 - Preparedness (5)
 - Reference (15)
 - Transportation (16)
 - Utilities (4)
- Keywords

	Oregon Tsunami Data Compilation 2022 The Oregon Department of Geology and Mineral Industries (DOGAMI) maintains the most up-to-date tsunami data.
	Oregon's Natural Areas 2020 The Protected Areas Database of the United States (PAD-US) is a geodatabase, managed by USGS GAP, that contains information on the natural areas of the United States.
	2021 House District SB 882 (effective 1/1/23) This data represents the 2021 Adopted House districts from SB 882.
	2021 Senate District SB 882 (effective 1/1/23) This data represents the 2021 Adopted Senate districts from SB 882.
	2021 Congress District SB 881A (effective 1/1/23) This data represents the 2021 Adopted Congressional districts from SB 881A.
	Oregon Highway Network - 2021 This data layer is an element of the Oregon GIS Framework. This statewide file includes all state-owned highways.
	Oregon Transportation Systems - 2021 Regional Resiliency Assessment Program (RRAP) The Oregon Transportation Systems project assessed the resiliency of Oregon's roadway, airport, and rail systems.
	Oregon Lidar: Canopy Height Model This GIS dataset contains mosaicked digital canopy height model (CHM) raster grids depicting lidar-derived canopy heights.
	Oregon Lidar: Digital Terrain Model Hillshade This GIS dataset contains mosaicked digital terrain model (DTM) hillshade raster grids depicting lidar-derived terrain.
	Oregon Lidar: Digital Terrain Model This GIS dataset contains mosaicked digital terrain model (DTM) raster grids depicting lidar-derived terrain.

Partners



Oregon Spatial Data Library Plans



Launched in November 2009

Sunset in early 2024

- Framework datasets moved to GeoHub
- Historical framework datasets removed from OSDL and archived by DAS and/or data steward
- Data without proper metadata removed from OSDL
- Move approx. 1/3 of OSDL data (non-framework) to redesigned Oregon Explorer (OE)

Oregon Explorer: www.oregonexplorer.info

A COLLABORATION OF: OSU LIBRARIES & PRESS + INSTITUTE FOR NATURAL RESOURCES

Log out Help Janine Salwasser My Explorer

OREGON EXPLORER Natural Resources Digital Library

Home Topics Places Tools Data

Type something... Search

All Topics

Animals and Plants

Climate, Water, and Air

Coast, Ocean, and Marine

Forestry and Agriculture

Land Use and Planning

Landscapes and Ecosystems

People and Communities

TOP PICKS

- Hazards
- Land Use
- Mid-Coast Water
- Renewable Energy
- Rural Communities
- Sage-Grouse
- Wetlands
- Wildfire Risk

Explore TOPICS

Explore PLACES

Find a place or address.

Counties Satellite

TYPE ANY PLACE OR ADDRESS HERE

CHANGE THE GEOGRAPHY

Start Exploring

CLICK THE MAP TO EXPLORE

Earthstar Geographics

Go to the Full Advanced OE Map Viewer

A natural resources digital library that integrates and provides access to data and scholarly information to support natural resources planning and decision-making

Launched in June 2007

Redesigned in 2015

Issue: Drupal 7 support goes away in 2023

🌐 -- Indicates a topic that has been sponsored for content updates.

Show

Sponsored Topics



AQUACULTURE 🌐

Aquaculture is the breeding, rearing and harvesting of fish, shellfish, plants, algae, and other organisms in fresh or salt water.



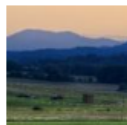
CLIMATE CHANGE 🌐

Climate change refers to long-term change in global or regional climate patterns, especially a change in the average atmospheric temperature. Changes in Oregon's climate are affecting the state's natural and human systems.



COLLECTIVE GROUPS 🌐

Collective groups unite diverse partners in working together on forest, rangeland, and/or fire resiliency in Oregon. [See where they work.](#)



LAND USE 🌐

The Oregon land use planning program is widely recognized for its pioneering efforts to preserve the principle of local responsibility for land use decisions while defining a broader public interest at the state level.



OAK CREEK WATERSHED NETWORK 🌐

Oak Creek descends nearly 2000 feet from its timbered headwaters through residential, farm and conservation lands, into the urban reach in Corvallis and its confluence with the Marys River. The Network exists to care for this special place where we live, work and play.



RURAL COMMUNITIES 🌐

Information to help local residents and policymakers make decisions about rural communities including vitality and changes in Oregon's communities.



WATER PLANNING 🌐

Water planning is a critical component to securing Oregon's instream and out-of-stream water future in the face of increasing water scarcity and uncertainty. Through planning you can understand your water situation and identify solutions to water challenges.



WILDFIRE RISK 🌐

The Oregon Wildfire Risk Explorer is designed to identify the wildland-urban interface and wildfire risk at the property ownership level. It shows a comprehensive view of wildfire risk within the State of Oregon, indicates local fire history, and offers additional resources.



AQUATIC MITIGATION 🌐

Aquatic mitigation seeks to balance alterations made to our aquatic resources with protecting functions such as controlling floodwater, filtering pollution and providing natural habitats for plants and animals.



COASTAL RESEARCH 🌐

Enhancing the visibility and promoting coordination of the coastal and marine research and associated data collected along the Oregon coast.



HAZARDS 🌐

Natural hazards refers to atmospheric, hydrologic, geologic, and wildfire phenomena that have the potential to affect humans, their structures, or their activities adversely.



MID-COAST WATER 🌐

Developing regional solutions from Cascade Head to Cape Perpetua to provide adequate water supplies for water systems and local industry, while providing adequate flows and water quality for fish, wildlife, and our environment.



RENEWABLE ENERGY 🌐

Increased renewable energy development in Oregon is anticipated in the coming decades, particularly solar energy, wind energy, and associated transmission line development



SAGE-GROUSE 🌐

Eastern Oregon is home to over 15 million acres of sage-grouse habitat. The SageCon Partnership advances policies and actions that reduce threats to sage-grouse, sagebrush ecosystems and Oregon's rural communities.



WETLANDS 🌐

Wetlands are uniquely productive and valuable ecosystems with permanent or seasonal standing water. Salt marshes, pitcher-plant bogs, mountain fens, and desert saltgrass flats are just a few of the wetland types in Oregon.



WILDLIFE 🌐

Wildlife can be defined as non-domesticated animals and their associated habitats. The Oregon Conservation Strategy offers a blueprint for conservation of the state's native fish and wildlife and their habitats.

Oregon Explorer Redesign Plans

Focus on the current 16 sponsored topics

Migrate from Drupal 7 to Hub platform

- More landing page design options
- Better access to data and tools
- Cloud hosted
- Easier to maintain

Launch date: March 2024

Search for Topics, Data, and Tools

Welcome to the redesigned platform for the Oregon Explorer! Find and access data, mapping tools, digital documents and other resources that support natural resource planning and decision-making.

TOPICS



Wildfire

The Oregon Wildfire Risk Explorer is designed to identify the wildland-urban interface and wildfire risk at the property ownership level...

Explore



Renewable Energy

Increased renewable energy development in Oregon is anticipated in the coming decades, particularly solar energy, wind energy, and...

Explore



Land Use

Oregon's 19 Statewide Land Use Planning Goals, which were created following the passage of Senate Bill 100 in 1973, serve as...

Explore

[Go to All Topics ->](#)

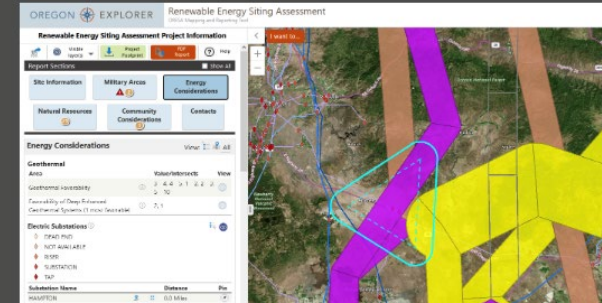
TOOLS

Featured Tool :: Renewable Energy Siting Assessment

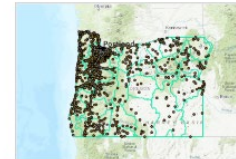
Renewable Energy

The ORESA tool is an interactive application that allows users to review data and input potential project characteristics in order to get a coarse level perspective of potential land use, military, natural resources and other considerations.

[Go to tool](#)



DATA



Oregon Administrative Boundaries

Administrative Boundaries

Explore



explorer_places

Explore



Firewise Communities 2018

The national Firewise USA® recognition program provides a collaborative framework to hel...

Explore



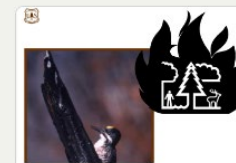
Community Wildfire Protection Plan Areas...

A Community Wildfire Protection Plan (CWPP) is a plan developed by a community in an area wit...

Explore

[Go to all Data ->](#)

DOCUMENTS



Wildland Fire in Ecosystems: Effects of...

Describes effects of fire on animals and habitat. United States Department of...

View



Collaborative Directory

The Collaborative Directory is a USDA Forest Service publication that describes the 36 forest...

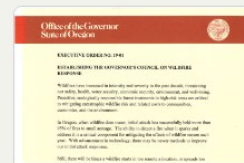
View



Creating a Community Wildfire Protection Plan

FEMA U.S. Fire Administration guide to creating a Community Wildfire Protection Plan (CWPP).

View



Executive Order 19-01 Establishing the...

On January 30, 2019, Governor Brown signed an executive order (EO 19-01) creating the...

View



EXPLORER Natural Resources Digital Library

- Home
- Topics
- Places
- Tools
- Data

Type something... Search

- All
- Topics
- Places

Wildfire Risk

FORESTRY AND AGRICULTURE

- Aquaculture
- Century Farm and Ranch
- Collective Groups
- Dairy and Poultry
- Farming and Agriculture
- Forest Management
- Wildfire Risk

- INTRO
- ARTICLES & STORIES
- MAPS & TOOLS
- REPORTS & PUBS
- DATA
- MORE



The Oregon Wildfire Risk Explorer is designed to identify the wildland-urban interface and wildfire risk at the property ownership level. It shows a comprehensive view of wildfire risk within the State of Oregon, indicates local fire history, and offers additional resources.

Source: Oregon Department of Transportation, CC 2.0

SPONSORED BY



Oregon Department of Forestry



U.S. Forest Service

Oregon Explorer landing page



Oregon Wildfire Risk Explorer

The Senate Bill 762 statewide wildfire risk map and homeowner risk reports are unavailable while the map is being updated. The maps presented here are from the 2018 Quantitative Wildfire Risk Assessment and the rest of this site is still ready for you to explore.

EXPLORE RELATED:

- ODF Mapping and WUI Information
- OSU Risk Mapping



Oregon Defensible Space Code

Under Senate Bill 762, the Office of State Fire Marshal is mandated to adopt a statewide minimum defensible space code. Agencies, interest groups, and individuals are welcome to provide input during the adoption process.

EXPLORE RELATED:

- Firewise USA®



Community Wildfire Protection Plans

Access Community Wildfire Protection Plans (CWPPs) and resources about plan development.

EXPLORE RELATED:

- Oregon CWPP Planning Tool
- Creating a CWPP
- Financial Support Resources

Sponsored Wildfire Risk Landing Page on current Oregon Explorer (Drupal 7)

Wildfire

The Oregon Wildfire Risk Explorer is designed to identify the wildland-urban interface and wildfire risk at the property ownership level. It shows a comprehensive view of wildfire risk within the State of Oregon, indicates local fire history, and offers additional resources.

Sponsored by:



Photo by Oregon Department of Transportation, June, 2010 CC BY 2.0

Oregon Wildfire Risk Explorer

Wildfire Risk Explorer

The Senate Bill 762 statewide wildfire risk map and homeowner risk reports are unavailable while the map is being updated. The maps presented here are from the 2018 Quantitative Wildfire Risk Assessment and the rest of this site is still ready for you to explore.

Explore Related:

- [ODF Mapping and WUI Information](#)
- [OSU Risk Mapping](#)

Wildfire Resources



Redesigned Oregon Explorer landing page

Example of a new sponsored Wildfire Risk Landing Page option on redesigned Oregon Explorer (Hub) featuring high priority mapping tool

Info

- [Effects of Wildfire on Vegetation](#)
- [Effects of Wildfire on Animals](#)
- [Effects of Wildfire on Soil and Water](#)
- [What is a Fire Regime?](#)
- [Historical Wildfire Conditions in Oregon](#)
- [The Increase in Fuel Levels](#)

Community Wildfire Protection Plan Areas (2020)

Oregon Explorer
Oregon State University GISci

Summary

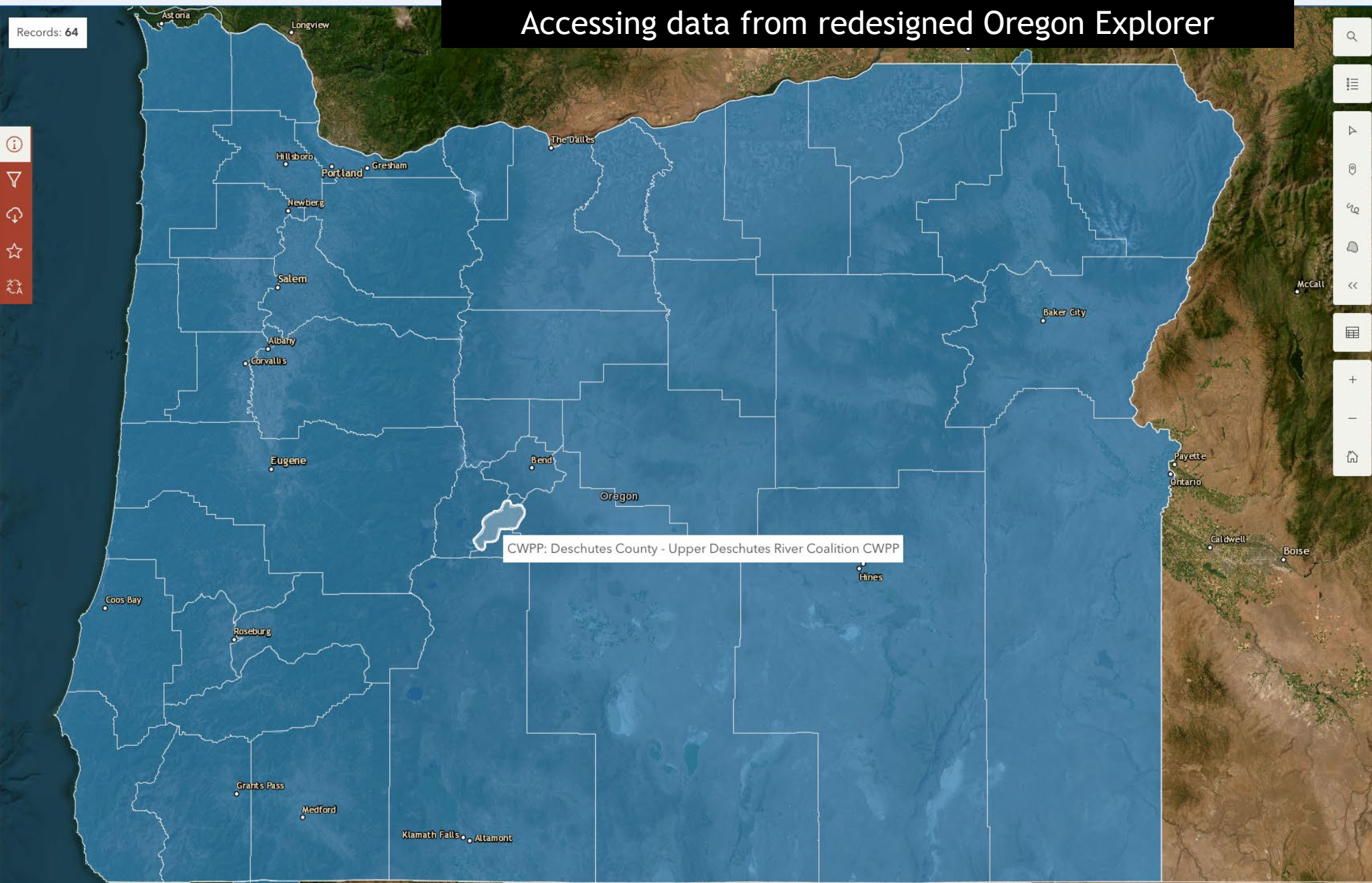
A delineation of the Oregon Community Wildfire Protection Plan (CWPP) Boundaries. (Oregon Department of Forestry, 2020).

[View Full Details](#)

[Download](#)

Details

- Dataset**
Feature Layer
- October 19, 2023**
Info Updated
- June 1, 2023**
Data Updated
- June 1, 2023**
Published Date
- Records: 64**
[View data table](#)
- Public**
Anyone can see this content
- No License Provided**
Request permission to use



Accessing data from redesigned Oregon Explorer

Records: 64

I want to use this >

Next steps

- Meet with all topic sponsors
- With each sponsor, identify preferred landing page template
- Prioritize and move content over to hub site
- Launch redesigned Oregon Explorer (once the 16 sponsored landing pages have been created on the hub site)
- Concurrently sunset Oregon Spatial Data Library with OE launch

For more information

Oregon Explorer program and sponsor questions: janine.salwasser@oregonstate.edu

OSDL and OE data questions: myrica.mccune@oregonstate.edu

OSDL and OE technical questions: marc.rempel@oregonstate.edu