

Hydrography data management – Implications of recent USGS decisions

Brian Staab - USFS -R6 - Regional Hydrologist

Jay Stevens - BLM - OR/WA - GIS Specialist Hydro Apps

NWFP - SMG - October 19th 2022



Issue

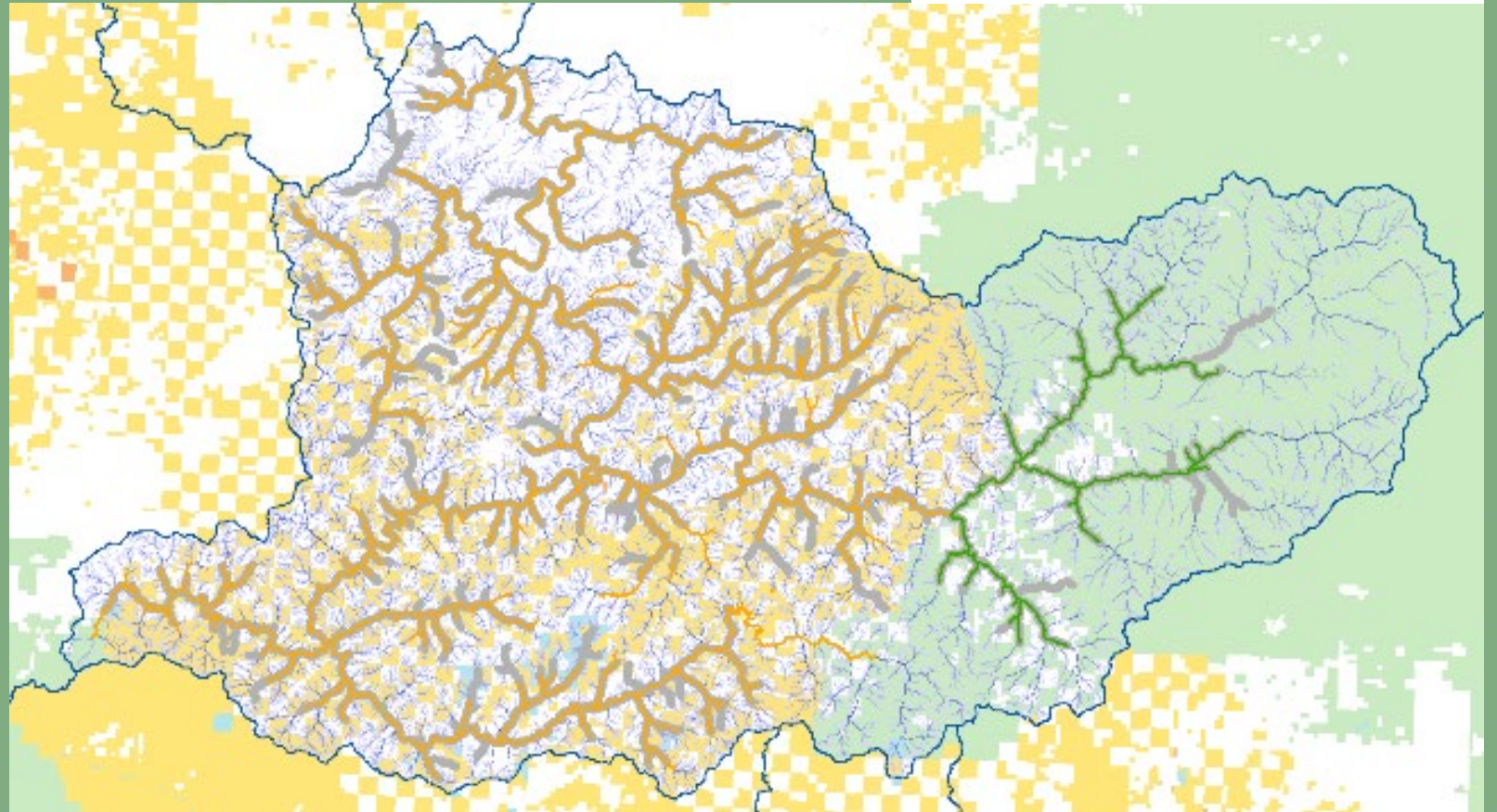
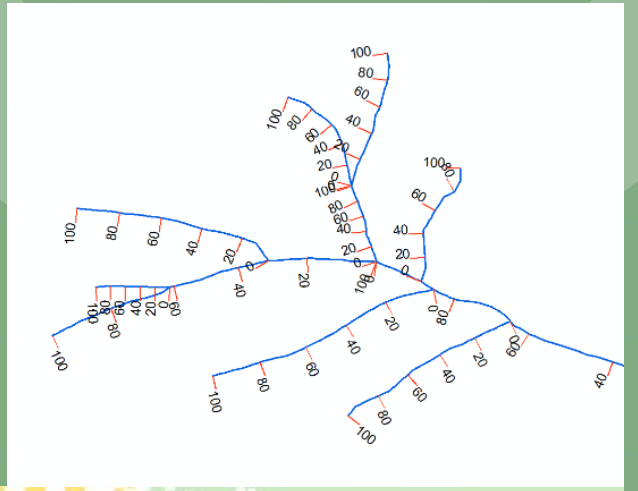
- Unexpected announcement in August 2022
- USGS to discontinue stewardship program for
 - National Hydrography Dataset (NHD) in Dec 2022
 - Watershed Boundary Dataset (WBD) in June 2023
- NHD/WBD to become static, legacy datasets.
- Major impact to PNW since we are actively improving the data and use it to support so many mission-critical activities.
- So far, multiple interagency dialogues with USGS have not altered the decision.



Data integration and interagency exchange

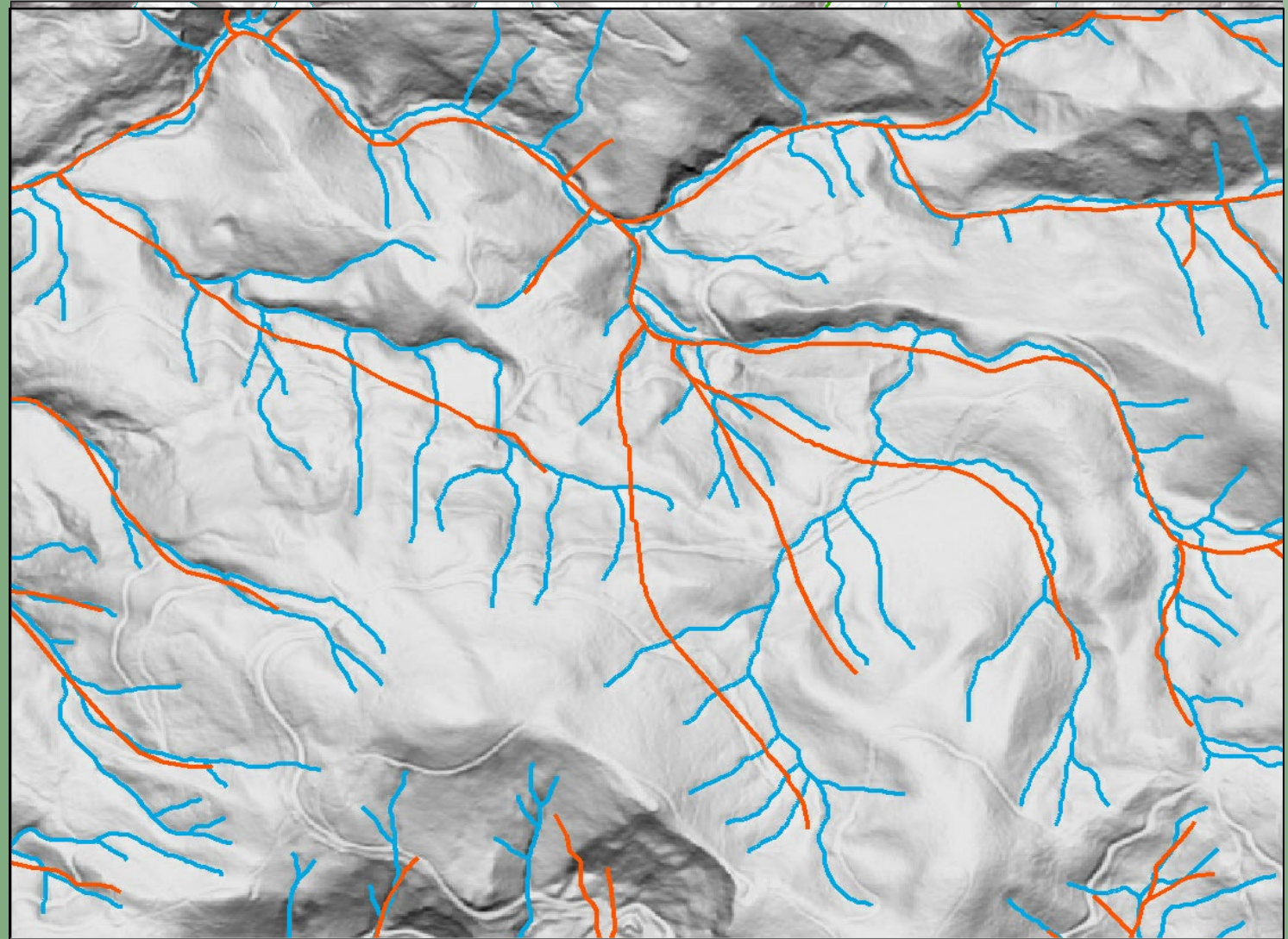
- Shared geometry and route system
- Key to interagency data integration
- Ex. Fish habitat and distribution

NHD route system



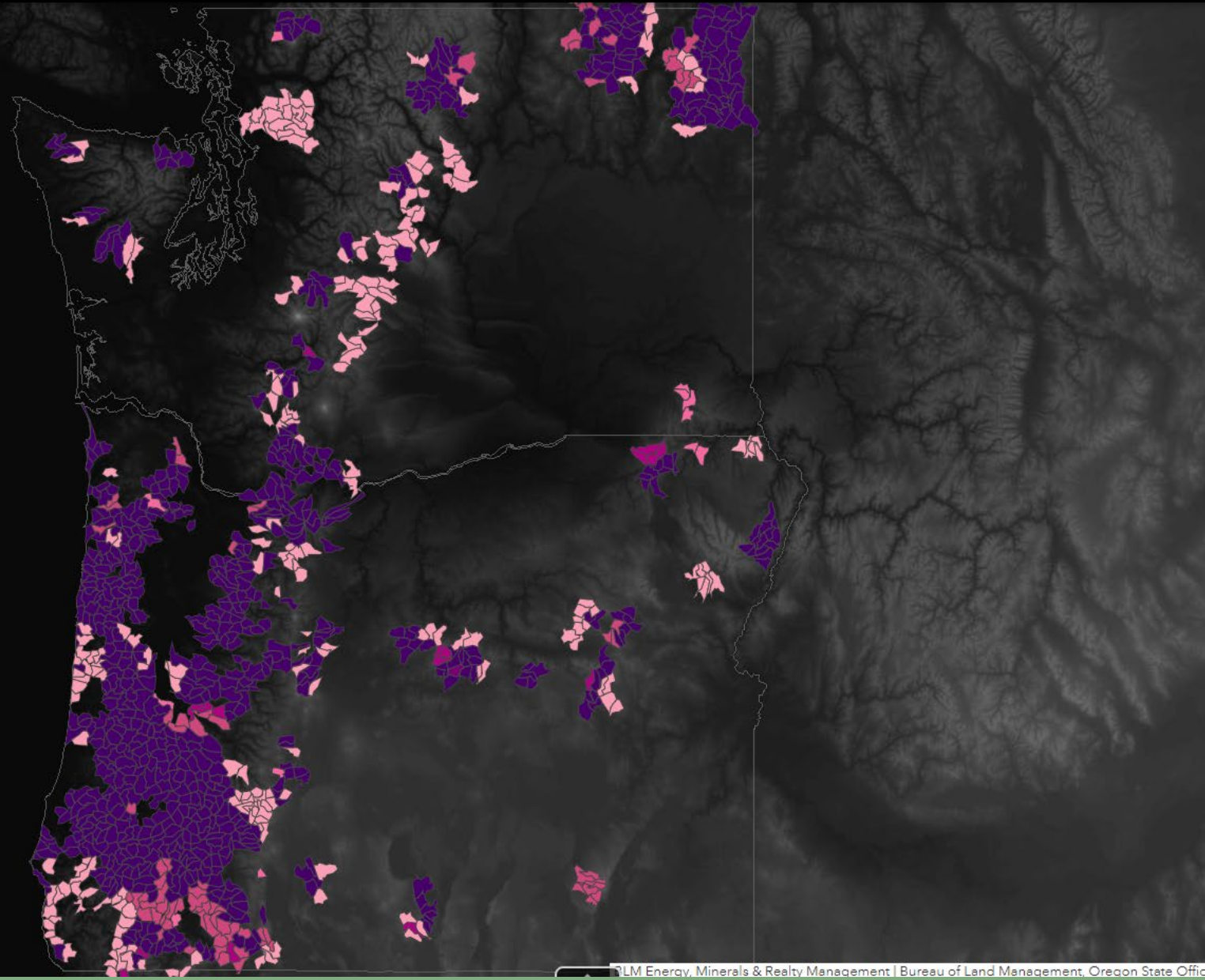
Active Investment in NHD/WBD Data Quality

- Active improvement from field work and lidar-based DEMs
- Recent heavy investment in lidar-based hydrography, re-delineating whole watersheds



Red lines in images show old NHD lines
Adds and deletes from field-based
surveys before PNW update with lidar-based
data.

Find address or place



Layer List

Layers

- NHD LiDAR Delineation Status
 - Complete
 - NHD Update In Progress
 - Ready for NHD Update
 - Review In Progress
 - Delineation In Progress
 - Planned
 - Other
- WBD LiDAR Delineation Status
- U.S. State Boundaries (DOC 2019) - BND - States (Census 2019)
- Terrain: Elevation Tinted Hillshade
- BLM OR District and Field Office Land Boundaries
- Hydrologic Unit Boundaries
- State
- USFS Admin Boundaries
- Cached ORWA BLM Carto Basemap
- Terrain
- DOGAMI Bare Earth Hillshade
- WA DNR Lidar Hillshade



60mi
-120.307 47.072 Degrees

Map shows watersheds where lidar-based stream delineations are complete or in-work

USGS Decision

- Cease support of NHD/WBD stewardship programs.
- Develop “3DHP”, a new data model and dataset to replace NHD/WBD.
 - 100% based on elevation-derived hydrography (EDH) from LiDAR

USGS Rationale

- Insufficient resources to support both systems.

Coordination thus Far

- PNWHF agencies have been meeting with USGS National 3DHP Program Managers.
 - business needs
 - implications of USGS decision
 - potential solutions



- National USFS/USGS discussions have recently begun.

Options for Senior Managers

1. Request that USGS-Geospatial support NHD/WBD while building 3DHP
 - National or PNW only
2. Request USGS-Geospatial
 - extend NHD/WBD support until at least March 2024
 - build a hybrid 3DHP/NHD system that meets our needs
3. Support separate interagency data system
 - simpler than NHD/WBD
 - PNW only or National
4. Agencies manage separate datasets, work to share as needed
 - Regional/State Offices or Unit level

